

Safety & Operating Instructions

DE	Sicherheits- und Betriebsanweisungen
PL	Instrukcje dotyczące bezpieczeństwa i obsługi
CZ	Bezpečnostní a provozní pokyny
FR	Consignes de sécurité et d'utilisation
IT	Istruzioni per la sicurezza e l'uso
ES	Instrucciones de seguridad y funcionamiento
HU	Biztonsági és használati útmutató
DK	Sikkerheds- og betjeningsvejledning
FI	Turvallisuus- ja käyttöohjeet
NO	Sikkerhets- og bruksanvisning
NL	Veiligheids- en bedieningsinstructies
SE	Säkerhets- och bruksanvisningar
PT	Instruções de segurança e de funcionamento
SK	Bezpečnostné a prevádzkové pokyny
BG	Инструкции за безопасност и експлоатация
GR	Οδηγίες ασφαλείας και λειτουργίας
HR	Sigurnosne i upute za rad
LT	Saugos ir naudojimo instrukcijos
RO	Instrucțiuni de siguranță și operare
SL	Varnost in navodila za uporabo

HYDRAULIC SHOP PRESS

DE	Produktname	Hydraulische Werkstattpresse
EN	Product name	Hydraulic shop press
PL	Nazwa produktu	Hydrauliczna prasa warsztatowa
CZ	Název výrobku	Hydraulický dílenský lis
FR	Nom du produit	Presse hydraulique d'atelier
IT	Nome del prodotto	Pressa idraulica da officina
ES	Nombre del producto	Prensa hidráulica de taller
HU	Termék neve	Hidraulikus műhelyprés
DA	Produktnavn	Hydraulisk værkstedspresse
FI	Tuotteen nimi	Hydraulinen korjaamopuristin
NL	Productnaam	Hydraulische werkplaatspers
NO	Produktnavn	Hydraulisk verkstedspresse
SE	Produktnamn	Hydraulisk verkstadspress
PT	Nome do produto	Prensa hidráulica de oficina
SK	Názov produktu	Hydraulický dielenský lis
BG	Име на продукта	Хидравлична сервисна преса
EL	Όνομα προϊόντος	Υδραυλική πρέσα εργαστηρίου
HR	Naziv proizvoda	Hidraulična radionička preša
LT	Produktu pavadinimas	Hidraulinis dirbtuvinis presas
RO	Numele produsului	Presă hidraulică de atelier
SL	Ime izdelka	Hidravlična delavniška stiskalnica
DE Modell EN Product model PL Model produktu CZ Model výrobku FR Modèle IT Modello ES Modelo HU Modell DA Model FI Tuotteen malli NL Productmodel NO Produktmodell SE Produktmodell PT Modelo do produto SK Model BG Модел на продукт EL Μοντέλο προϊόντος HR Model proizvoda LT : Gaminio modelis RO : Model de produs SL : Model izdelka		MSW-WP-12T MSW-WP-20T
DE Hersteller EN Manufacturer PL Producent CZ Výrobce FR Fabricant IT Produttore ES Fabricante HU Termelő DA Producent FI Valmistaja NL Producent NO Produsent SE Tillverkare PT Fabricante SK Výrobca BG Производител EL Κατασκευαστής HR Proizvođač LT Gamintojas RO Producător SL Proizvajalec		expondo Polska sp. z o.o. sp. k.
DE Anschrift des Herstellers EN Manufacturer Address PL Adres producenta CZ Adresa výrobce FR Adresse du fabricant IT Indirizzo del produttore ES Dirección del fabricante HU A gyártó címe DA Producentens adresse FI Valmistajan osoite NL Adres producent NO Produsentens adresse SE Tillverkarens adress PT Endereço do fabricante SK Adresa výrobcu BG Адрес на производителя EL : Διεύθυνση κατασκευαστή HR Adresa proizvođača LT Gamintojo adresas RO Adresa producătorului SL Naslov proizvajalca		ul. Nowy Kisielin – Innowacyjna 7, 66-002 Zielona Góra Poland, EU



This User Manual has been translated using machine translation. We have made every effort to ensure the translation is accurate, but please note that automated translations are not perfect and are not meant to replace human translators. The official version of the User Manual is in English. Any differences between the translated version and the original English are not legally binding. If you have any questions about the accuracy of the translation, please refer to the English version, which is the official reference. More language versions are available upon request via info@expondo.com.

Technical data

Parameter description	Parameter value	
Product name	Hydraulic shop press	
Model	MSW-WP-12T	MSW-WP-20T
Max. pressing force[ton]	12	20
Stroke[mm]	130	150
Dimensions [width x length x height; mm]	540 x 630 x 1200	600 x 660x 1500
Weight [kg]	45	66

1. General description

The user manual is designed to assist in the safe and trouble-free use of the device. The product is designed and manufactured in accordance with strict technical guidelines, using state-of-the-art technologies and components. Additionally, it is produced in compliance with the most stringent quality standards.

**DO NOT USE THE DEVICE UNLESS YOU HAVE THOROUGHLY READ AND UNDERSTOOD
THIS USER MANUAL.**

To increase the product life of the device and to ensure trouble-free operation, use it in accordance with this user manual and regularly perform maintenance tasks. The technical data and specifications in this user manual are up to date. The manufacturer reserves the right to make changes associated with quality improvement. The device is designed to reduce noise emission risks to a minimum, taking into account technological progress and noise reduction opportunities.

Legend



The product satisfies the relevant safety standards.



Read instructions before use.



Note! Make sure bystanders remain within a safe distance from the working area.



WARNING! or **CAUTION!** or **REMEMBER!** Applicable to the given situation.
(general warning sign)



Wear protective goggles.



Wear protective gloves.



Wear head protection.



ATTENTION! Hand crush hazard!



PLEASE NOTE! Drawings in this manual are for illustration purposes only and in some details may differ from the actual product.

2. Usage safety



ATTENTION! Read all safety warnings and all instructions. Failure to follow the warnings and instructions may result in serious injury or even death.

The terms "device" or "product" are used in the warnings and instructions to refer to Hydraulic Shop Press.

2.1. Safety in the workplace

- a) Make sure the workplace is clean and well lit. A messy or poorly lit workplace may lead to accidents. Try to think ahead, observe what is going on and use common sense when working with the device.
- b) Do not use the device in a potentially explosive environment, for example in the presence of flammable liquids, gases or dust. The device generates sparks which may ignite dust or fumes.
- c) If you discover damage or irregular operation, immediately switch the device off and report it to a supervisor without delay.
- d) If you are unsure about whether the product is operating correctly or if you find damage, please contact the manufacturer's service centre.
- e) Only the manufacturer's service centre may make repairs to the product. Do not attempt to make repairs yourself!
- f) Children or unauthorised persons are forbidden to enter a work station. A distraction may result in loss of control over the device.
- g) Regularly inspect the condition of the safety labels. If the labels are illegible, they must be replaced.
- h) Please keep this manual available for future reference. If this device is passed on to a third party, the manual must be passed on with it.
- i) Keep packaging elements and small assembly parts in a place not available to children.
- j) Keep the device away from children and animals.
- k) If this device is used together with another equipment, the remaining instructions for use shall also be followed.



Remember! When using the device, protect children and other bystanders.

2.2. Personal safety

- a) Before commencing work, make sure to read and understand the operation manual! Safety recommendations must be followed at all times to avoid injury and damages occurring from misuse!
- b) This operation manual must be retained for future reference. If the machine is passed onto a third person, the operation manual must also be passed on.
- c) If the machine is operated outside its intended use or is damaged due to improper handling, the seller/manufacturer is not liable for any resulting damage.
- d) Review this operation manual and the safety recommendations prior to each use of the machine.
- e) Inspect the machine before each use to check for worn or damaged parts. This machine must not be operated if any parts are damaged. If the machine has been overloaded or subjected to strong shocks or vibrations, it must be inspected by a qualified service technician before resuming operation.
- f) Do not operate the machine if it is damaged. If such a condition occurs, it must be taken to an authorized service center for inspection and repair.
- g) Perform regular inspections to ensure the machine is in proper working condition. Replace worn or damaged parts as needed.
- h) Do not disassemble or replace parts of the machine without proper authorization.
- i) Use only original manufacturer-recommended spare parts to maintain performance and safety.
- j) Do not use the device when tired, ill or under the influence of alcohol, narcotics or medication which can significantly impair the ability to operate the device.

- k) The machine may be operated by physically fit persons who are able to handle the machine, are properly trained, who have reviewed this operating manual and have received training in occupational health and safety.
- l) The product is not designed to be handled by persons (including children) with limited mental and sensory functions or persons lacking relevant experience and/or knowledge unless they are supervised by a person responsible for their safety or they have received instruction on how to operate the product.
- m) When working with the device, use common sense and stay alert. Temporary loss of concentration while using the device may lead to serious injuries.
- n) Use personal protective equipment as required for working with the device, specified in Legend". The use of correct and approved personal protective equipment reduces the risk of injury.
- o) Do not overestimate your abilities. When using the device, keep your balance and remain stable at all times. This will ensure better control over the device in unexpected situations.
- p) Do not wear loose clothing or jewellery. Keep hair, clothes and gloves away from moving parts. Loose clothing, jewellery or long hair may get caught in moving parts.
- q) The device is not a toy. Children must be supervised to ensure that they do not play with the device.
- r) Do not put your hands or other items inside the device while it is in use!
- s) This press is designed and intended for use by properly trained and experienced personnel only. If you are not familiar with the proper and safe operation of a hydraulic press, do not use until proper training and knowledge has been obtained.

2.3. Safe device use

- a) Do not exceed the maximum load capacity of the machine.
- b) Avoid striking the press or the workpiece to prevent damage.
- c) Unauthorized persons are not allowed near a loaded press.
- d) Warn unauthorized persons about the machine's operation and ensure they maintain a safe distance from the press.
- e) Always pay close attention to the workpiece during operation.
- f) Never leave the workpiece unattended while working on it.
- g) Do not exceed the maximum press capacity and/or maximum actuator displacement. If in doubt, use the pressure gauge to determine the applied pressure.
- h) Open the release valve after finishing work.
- i) Ensure the workpiece does not fall off the press worktable. Avoid situations where it could slip or become unstable.
- j) Work on only one piece at a time.
- k) Do not use the machine for long-term loading. It is not designed to withstand prolonged pressure.
- l) Do not modify the machine. Any unauthorized alterations may affect safety and functionality.
- m) Do not perform mechanical work (welding, cutting, etc.) on the workpiece while using the press.
- n) Secure the machine after use to prevent unauthorized access or operation.
- o) Inspect the machine regularly and replace worn or damaged parts with new ones from an authorized service provider.
- p) Be cautious of workpieces slipping or falling off the worktable, as this can cause serious injury or death.
- q) Follow occupational health and safety regulations when transporting and handling the hydraulic press.
- r) Do not operate the machine if you are tired or intoxicated.
- s) Ensure the surface under the press is dry, level, and stable. Use protective non-slip footwear while operating the machine.
- t) Operators must wear proper safety gear, including goggles, a face mask, and heavy-duty protective gloves. Keep hands, limbs, and objects away from articulated parts.
- u) Do not expose the machine to harsh environmental conditions, as it is not resistant to external elements.
- v) Secure the load properly to prevent it from shifting during press operation. The workpiece should be centered.
- w) Do not press items with spring-like properties (e.g., springs) or brittle objects that may crack, break, or explode under pressure.
- x) When not in use, store in a safe place, away from children and people not familiar with the device who have not read the user manual. The device may pose a hazard in the hands of inexperienced users.

- y) Keep the device in perfect technical condition. Before each use check for general damage, especially check moving components for cracked parts or elements, and for any other conditions which may impact the safe operation of the device. If damage is discovered, hand over the device for repair before use.
- z) Keep the device out of the reach of children.
- aa) Device repair or maintenance should be carried out by qualified persons, only using original spare parts. This will ensure safe use.
- bb) To ensure the operational integrity of the device, do not remove factory-fitted guards and do not loosen any screws.
- cc) When transporting and handling the device between the warehouse and the destination, observe the occupational health and safety principles for manual transport operations which apply in the country where the device will be used.
- dd) Avoid situations where the device stops working during use due to excessive loading. This may result in overheating of the drive elements and damage to the device.
- ee) Do not move, adjust or rotate the device in the course of work.
- ff) Do not leave this appliance unattended while it is in use.
- gg) Clean the device regularly to prevent stubborn grime from accumulating.
- hh) The device is not a toy. Cleaning and maintenance may not be carried out by children without supervision by an adult person.
- ii) It is forbidden to interfere with the structure of the device in order to change its parameters or construction.
- jj) Do not overload the device.
- kk) Check the press for loose or damaged parts before each operation.
- ll) Replace damaged parts and tighten all loose bolts before operating.
- mm) Some parts being pressed may have a tendency to pop out of the press or explode under pressure. Protect yourself accordingly.



ATTENTION! Despite the safe design of the device and its protective features, and despite the use of additional elements protecting the operator, there is still a slight risk of accident or injury when using the device. Stay alert and use common sense when using the device.

3. Use guidelines

The product is designed for straightening, bending, and pressing parts. It features an adjustable multi-position bed for customizable work height. Its integrated air pump reduces labor and enhances efficiency, making operations smoother and more convenient.

The user is liable for any damage resulting from unintended use of the device.

3.1. Device description



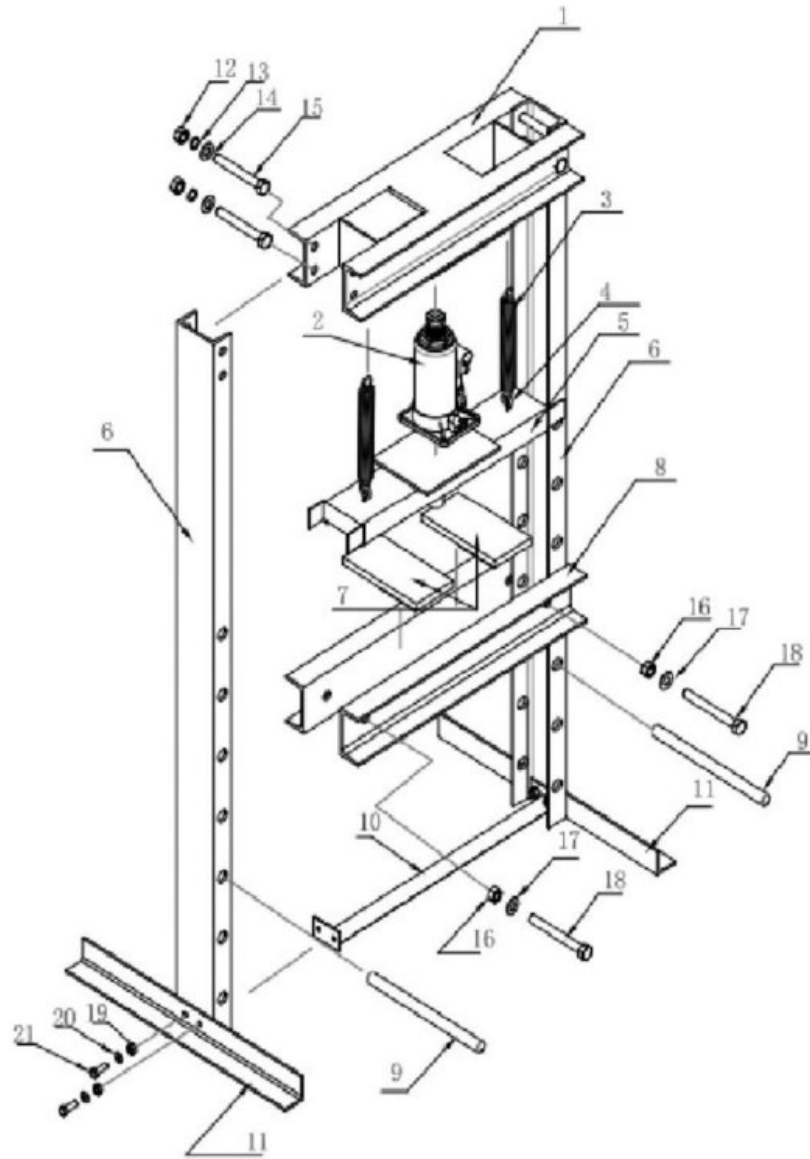
3.2. Device use

1. Place the workpiece on the bed frame and ensure it is positioned securely.
2. Locate the release valve and close it completely to prepare for operation.
3. Pump the handle until the ram moves close to the workpiece to begin applying pressure.
4. Continue pumping the handle to apply load to the workpiece but do not exceed the rated capacity.
5. Turn the release valve slowly to remove the applied load and release pressure safely.

3.3. Cleaning and maintenance

1. Lubricate Moving Parts – Apply a light coat of oil to all moving components, including the pump piston and hydraulic ram, on a regular basis.
2. Inspect Hydraulic Connections – Before each use, check all hydraulic connections and hoses for any signs of cuts, damage, or leaks. Do not operate the press if any damaged or leaking connections or hoses are detected.

PART NO	DESCRIPTION	QTY	PART NO	DESCRIPTION	QTY
1	Beam	1	12	M14 Nut	8
2	Jack	1	13	Spring WasherΦ14	8
3	Spring	2	14	WasherΦ14	8
4	Pull Bolt	2	15	M14×35 Bolt	8
5	Jack Plate	1	16	M10 Nut	2
6	Press Frame	2	17	WasherΦ10	2
7	Arbor Plate	2	18	M10×110 Bolt	2
8	Work Bench	1	19	M10 Nut	4
9	Pin	2	20	WasherΦ10	4
10	Rung	1	21	M10×25 Bolt	4
11	Foot	2	22		



Environmental and disposal information

Producer to customer

Dear Sir or Madam,

Let's take care of the environment! The product you own should not be disposed of with household waste. According to applicable regulations (Directive 2012/19/EU and other local regulations), used equipment must be taken to designated collection points for proper disposal and recycling.



How to Handle the Product at the End of Its Lifecycle?

- 1. Electrical and Electronic Equipment:** Products marked with the crossed-out wheeled bin symbol must not be disposed of with household waste. You can:
 - Take it to your local collection point for electrical and electronic equipment.
 - Use the “one-for-one” system (returning the old device when purchasing a new one, if available in your region).
- 2. Batteries and Accumulators:** If the product contains batteries, remove them before recycling and take them to designated battery collection points.
- 3. Packaging Materials:** Packaging, such as cardboard or plastic, should be sorted and placed in recycling bins.

Why is This Important?

Proper disposal of equipment and packaging materials:

- Protects the environment from harmful substances.
- Enables the recovery of valuable resources.
- Reduces the amount of waste sent to landfills.

Where to Find Information?

Information about waste collection points can be found on local authorities' websites or through your recycling service provider. If needed, contact our customer service team, who will gladly provide further details.

Thank you for your care for the environment and commitment to recycling!

Contact

expondo Polska sp. z o.o. sp. k.
ul. Nowy Kisielin – Innowacyjna 7
66-002 Zielona Góra | Poland, EU
info@expondo.com