



USER MANUAL

BEDIENUNGSANLEITUNG

INSTRUKCJA OBSŁUGI

NÁVOD K POUŽITÍ

MANUEL D'UTILISATION

ISTRUZIONI PER L'USO

MANUAL DE INSTRUCCIONES

HASZNÁLATI ÚTMUTATÓ BRUGSANVISNINGENKEL KÄYTTÖOHJE GEBRUIK

SAANWIJZING

BRUKSANVISNING

INSTRUÇÕES DE UTILIZAÇÃO

POUŽÍVATEĽSKÁ PRÍRUČKA

РЪКОВОДСТВО ЗА УПОТРЕБА

ΟΔ ΗΓΙΕΣ ΧΡΗΣΗΣ

UPUTE ZA UPORABU

NAUDOJIMO INSTRUKCIJA

MANUAL DE UTILIZARE

NAVODILA ZA UPORABO

EV-BATTERY LIFTER

DE	Produktname	EV Akku-Hubtisch
EN	Product name	EV-battery lifter
PL	Nazwa produktu	Podnośnik do akumulatorów samochodów elektrycznych
CZ	Název výrobku	Výsuvný stůl pro elektromobilní baterie
FR	Nom du produit	Table élévatrice pour batterie de véhicule électrique
IT	Nome del prodotto	Tavolo sollevatore per batterie di veicoli elettrici
ES	Nombre del producto	Mesa elevadora para baterías de vehículos eléctricos
HU	Termék neve	Elektromos jármű akkumulátor-emelőasztal
DA	Produktnavn	EV-batteriløfter
FI	Tuotteen nimi	Sähköajoneuvojen akkujen nostopöytä
NL	Productnaam	Heftafel voor EV-accu's
NO	Produktnavn	EV-batteriheis
SE	Produktnamn	EV-batterilyft
PT	Nome do produto	Mesa elevatória para baterias de veículos elétricos
SK	Názov produktu	Výsuvný stôl pre batérie elektromobilov
BG	Име на продукта	Подобен маса за батерии на електрически превозни средства
EL	Όνομα προϊόντος	Ανελκυστήρας μπαταριών ηλεκτρικών οχημάτων
HR	Naziv proizvoda	Dizalica za baterije električnih vozila
LT	Produktu pavadinimas	EV akumuliatorių kėlimo stalas
RO	Numele produsului	Masă ridicatoare pentru baterii de vehicule electrice
SL	Ime izdelka	Dvigalna miza za baterije električnih vozil
DE Modell EN Product model PL Model produktu CZ Model výrobku FR Modèle IT Modello ES Modelo HU Modell DA Model FI Tuotteen malli NL Productmodel NO Produktmodell SE Produktmodell PT Modelo do produto SK Model BG Модел на продукт EL Μοντέλο προϊόντος HR Model proizvoda LT : Gaminio modelis RO : Model de produs SL : Model izdelka		MSW-EVL-02
DE Hersteller EN Manufacturer PL Producent CZ Výrobce FR Fabricant IT Produttore ES Fabricante HU Termelő DA Producent FI Valmistaja NL Producent NO Produsent SE Tillverkare PT Fabricante SK Výrobca BG Производител EL Κατασκευαστής HR Proizvođač LT Gamintojas RO Producător SL Proizvajalec		expondo Polska sp. z o.o. sp. k.
DE Anschrift des Herstellers EN Manufacturer Address PL Adres producenta CZ Adresa výrobce FR Adresse du fabricant IT Indirizzo del produttore ES Dirección del fabricante HU A gyártó címe DA Producentens adresse FI Valmistajan osoite NL Adres producent NO Produsentens adresse SE Tillverkarens adress PT Endereço do fabricante SK Adresa výrobcu BG Адрес на производителя EL : Διεύθυνση κατασκευαστή HR Adresa proizvođača LT Gamintojo adresas RO Adresa producătorului SL Naslov proizvajalca		ul. Nowy Kisielin – Innowacyjna 7, 66-002 Zielona Góra Poland, EU



This User Manual has been translated using machine translation. We have made every effort to ensure the translation is accurate, but please note that automated translations are not perfect and are not meant to replace human translators. The official version of the User Manual is in English. Any differences between the translated version and the original English are not legally binding. If you have any questions about the accuracy of the translation, please refer to the English version, which is the official reference. More language versions are available upon request via info@expondo.com.

Technical data

Parameter description	Parameter value
Product name	EV-battery lifter
Model	MSW-EVL-02
Rated voltage [V~] / frequency [Hz]	230 / 50
Rated power [W]	750
IP	20
Capacity [kg]	1200
Min height [cm]	65
Max height [cm]	184
Dimensions [width x depth x height; mm]	820 x 2100 x 1840
Weight [kg]	418

1. General description

The user manual is designed to assist in the safe and trouble-free use of the device. The product is designed and manufactured in accordance with strict technical guidelines, using state-of-the-art technologies and components. Additionally, it is produced in compliance with the most stringent quality standards.

DO NOT USE THE DEVICE UNLESS YOU HAVE THOROUGHLY READ AND UNDERSTOOD THIS USER MANUAL.

To increase the product life of the device and to ensure trouble-free operation, use it in accordance with this user manual and regularly perform maintenance tasks. The technical data and specifications in this user manual are up to date. The manufacturer reserves the right to make changes associated with quality improvement. The device is designed to reduce noise emission risks to a minimum, taking into account technological progress and noise reduction opportunities.

Legend



The product satisfies the relevant safety standards.



Read instructions before use.



The product must be recycled.



WARNING! or **CAUTION!** or **REMEMBER!** Applicable to the given situation.
(general warning sign)



Wear protective goggles.



Wear protective gloves.



Wear head and face protection.



Wear foot protection.



ATTENTION! Electric shock warning!



ATTENTION! Hand crush hazard!



ATTENTION! Suspended weight!



Emergency stop!



PLEASE NOTE! Drawings in this manual are for illustration purposes only and in some details may differ from the actual product.

2. Usage safety



ATTENTION! Read all safety warnings and all instructions. Failure to follow the warnings and instructions may result in electric shock, fire and/or serious injury or even death.

The terms "device" or "product" are used in the warnings and instructions to refer to:

EV-battery lifter

2.1. Electrical safety

- a) The plug must fit the socket. Do not modify the plug in any way. Using original plugs and matching sockets reduces the risk of electric shock.
- b) Avoid touching earthed elements such as pipes, heaters, boilers and refrigerators. There is an increased risk of electric shock if the earthed device is exposed to rain, comes into direct contact with a wet surface or is operating in a damp environment. Water getting into the device increases the risk of damage to the device and of electric shock.
- c) Do not touch the device with wet or damp hands.
- d) Use the cable only for its designated use. Never use it to carry the device or to pull the plug out of a socket. Keep the cable away from heat sources, oil, sharp edges or moving parts. Damaged or tangled cables increase the risk of electric shock.
- e) If working with the device outdoors, make sure to use an extension cord suitable for outdoor use. Using an extension cord suitable for outdoor use reduces the risk of electric shock.
- f) If using the device in a damp environment cannot be avoided, a residual current device (RCD) should be applied. The use of an RCD reduces the risk of electric shock.
- g) Do not use the device if the power cord is damaged or shows obvious signs of wear. A damaged power cord should be replaced by a qualified electrician or the manufacturer's service centre.
- h) To avoid electric shock, do not immerse the cord, plug or device in water or other liquids. Do not use the device on wet surfaces.

- i) ATTENTION! DANGER TO LIFE! While cleaning, never immerse the device in water or other liquids.
- j) Do not use in very humid environments or in the direct vicinity of water tanks.
- k) Prevent the device from getting wet. Risk of electric shock!

2.2. Safety in the workplace

- a) Make sure the workplace is clean and well lit. A messy or poorly lit workplace may lead to accidents. Try to think ahead, observe what is going on and use common sense when working with the device.
- b) Do not use the device in a potentially explosive environment, for example in the presence of flammable liquids, gases or dust. The device generates sparks which may ignite dust or fumes.
- c) If you discover damage or irregular operation, immediately switch the device off and report it to a supervisor without delay.
- d) If you are unsure about whether the product is operating correctly or if you find damage, please contact the manufacturer's service centre.
- e) Only the manufacturer's service centre may make repairs to the product. Do not attempt to make repairs yourself!
- f) In case of fire, use a powder or carbon dioxide (CO₂) fire extinguisher (one intended for use on live electrical devices) to put it out.
- g) Children or unauthorised persons are forbidden to enter a work station. A distraction may result in loss of control over the device.
- h) Use the device in a well-ventilated space.
- i) The device produces dust and debris during operation. It is important to protect bystanders from their harmful effects.
- j) Use the "EMERGENCY STOP" if there is a risk of injury or death, accident or damage.
- k) Regularly inspect the condition of the safety labels. If the labels are illegible, they must be replaced.
- l) Please keep this manual available for future reference. If this device is passed on to a third party, the manual must be passed on with it.
- m) Keep packaging elements and small assembly parts in a place not available to children.
- n) Keep the device away from children and animals.
- o) If this device is used together with another equipment, the remaining instructions for use shall also be followed.
- p) ONLY use this lift on a firm, solid ground floor.



Remember! When using the device, protect children and other bystanders.

2.3. Personal safety

- a) Do not use the device when tired, ill or under the influence of alcohol, narcotics or medication which can significantly impair the ability to operate the device.
- b) The machine may be operated by physically fit persons who are able to handle the machine, are properly trained, who have reviewed this operating manual and have received training in occupational health and safety.
- c) When working with the device, use common sense and stay alert. Temporary loss of concentration while using the device may lead to serious injuries.

- d) Use personal protective equipment as required for working with the device, specified in section 1 "Legend". The use of correct and approved personal protective equipment reduces the risk of injury.
- e) To prevent the device from accidentally switching on, make sure the switch is on the OFF position before connecting to a power source.
- f) Do not overestimate your abilities. When using the device, keep your balance and remain stable at all times. This will ensure better control over the device in unexpected situations.
- g) The device is not a toy. Children must be supervised to ensure that they do not play with the device.
- h) Do NOT stand under the load area.

2.4. Safe device use

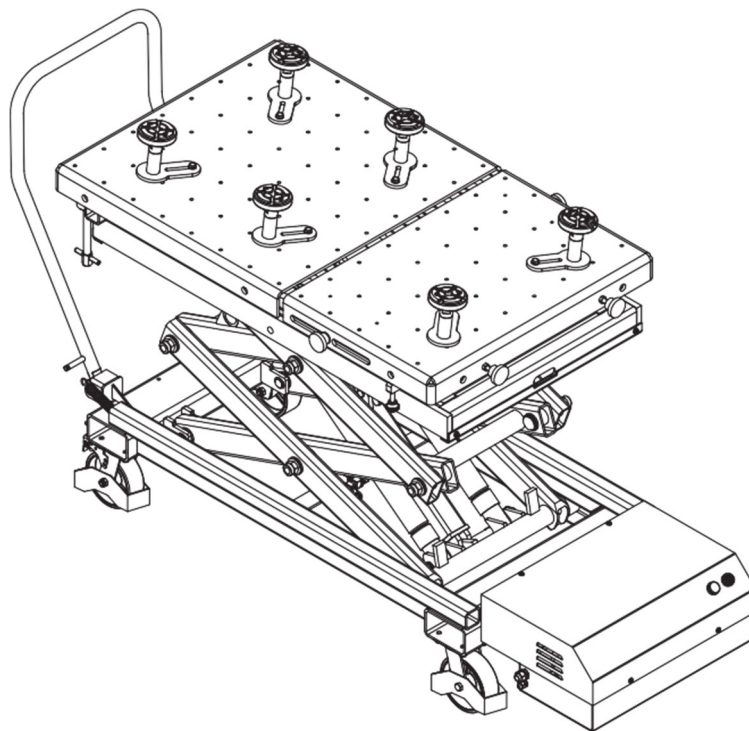
- a) Do not overload the device. Use the appropriate tools for the given task. A correctly-selected device will perform the task for which it was designed better and in a safer manner.
- b) Do not use the device if the "ON/OFF" switch does not function properly (does not switch the device on and off). Devices which cannot be switched on and off using the "ON/OFF" switch are hazardous, should not be operated and must be repaired.
- c) Make sure the plug is disconnected from the socket before attempting any adjustments, accessory replacements or before putting the device aside. Such precautions will reduce the risk of accidentally activating the device.
- d) When not in use, store in a safe place, away from children and people not familiar with the device who have not read the user manual. The device may pose a hazard in the hands of inexperienced users.
- e) Keep the device in perfect technical condition. Before each use check for general damage, especially check moving components for cracked parts or elements, and for any other conditions which may impact the safe operation of the device. If damage is discovered, hand over the device for repair before use.
- f) Keep the device out of the reach of children.
- g) Device repair or maintenance should be carried out by qualified persons, only using original spare parts. This will ensure safe use.
- h) To ensure the operational integrity of the device, do not remove factory-fitted guards and do not loosen any screws.
- i) When transporting and handling the device between the warehouse and the destination, observe the occupational health and safety principles for manual transport operations which apply in the country where the device will be used.
- j) Avoid situations where the device stops working during use due to excessive loading. This may result in overheating of the drive elements and damage to the device.
- k) Do not touch articulated parts or accessories unless the device has been disconnected from the power source.
- l) Do not move, adjust or rotate the device in the course of work.
- m) Do not leave this appliance unattended while it is in use.
- n) Clean the device regularly to prevent stubborn grime from accumulating.
- o) The specified vibrations emission was measured using standard measurement methods. Vibrations emissions may change if the device is used in different surroundings.
- p) Do not work on two workpieces at the same time.
- q) Only use air to supply the device, do not use any other gases.

- r) If you notice a leak from the device or hoses, immediately disconnect the compressed air supply and resolve the defects.
- s) Do not exceed the recommended hydraulic pressure as this may damage the device.
- t) The device is not a toy. Cleaning and maintenance may not be carried out by children without supervision by an adult person.
- u) Do not run the device when empty.
- v) It is forbidden to interfere with the structure of the device in order to change its parameters or construction.
- w) Keep the device away from sources of fire and heat.
- x) Do not exceed the maximum permissible operating pressure!
- y) Do NOT lift or lower the platform while extended.
- z) Do NOT move or lift if the center of gravity is outside the operational area.
- aa) Do NOT move the lifting table while the load is raised. Be extra cautious when passing through corners or slopes to prevent injuries.
- bb) Always lower the table to its lowest position before moving it with a load.
- cc) The load should not overhang the platform.
- dd) Prevent unintentional shifting of the load to ensure stability and safety.



ATTENTION! Despite the safe design of the device and its protective features, and despite the use of additional elements protecting the operator, there is still a slight risk of accident or injury when using the device. Stay alert and use common sense when using the device.

3. Use guidelines



The product is an electric hydraulic scissor-type vehicle designed for lifting and transporting EV batteries. It provides free lifting, flexible movement, and convenient operation. This lifter can be widely used in workshops, warehouses, and other work sites for safe and efficient battery handling.

The user is liable for any damage resulting from unintended use of the device.

3.1. Assembling the device

UNPACKING INSTRUCTIONS

1. **Cut Off Straps:** Remove all packaging strips securing the unit.
2. **Install Handle:** Insert the handle into the two tubes at the bottom of the base frame, then secure it using pins.
3. **Remove Packaging Materials:** Clear all packaging materials and remove the blocks used to secure the wheels.
4. **Carefully Move Trolley:** With caution, move the trolley from the pallet to the ground.

FUNCTION CHECK

Test the lifting mechanism several times without a load.

1. **Press the Up Button:** Raise the platform to the highest position.
2. **Press the Down Button:** Lower the platform to the minimum height.

OTHER FEATURE CHECKS

1. **Table Tilt Function:** Fully screw the drive screw in and out to ensure the tilt function works correctly.
2. **Stability Adjustment:**
 - Screw the stabilization screw into the threaded hole (about 5 turns).
 - When not in use, ensure the screw does not extend out of the square tube or touch the platform ground.
 - Refer to Figure 1 in the below "Device use" section for guidance.

3.2. Device use

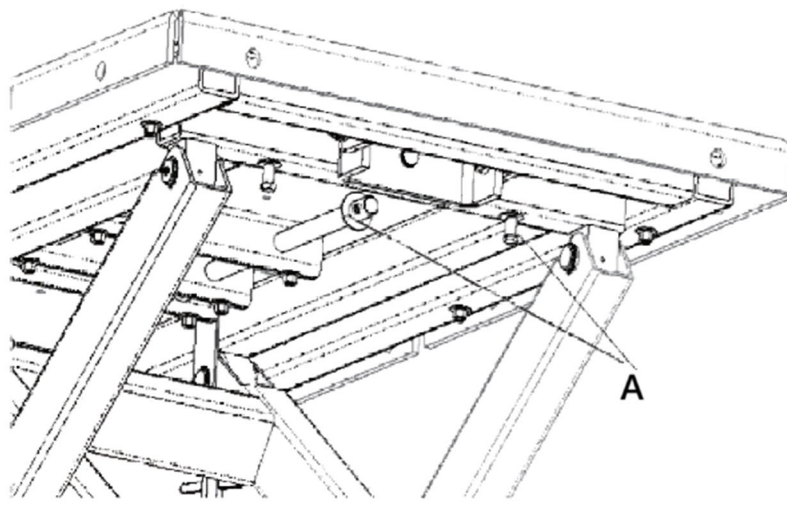


Figure 1

A- Leveler screws

FINE ADJUSTMENT TILTING FEATURE

The forcing screws (see Figure 1) allow for precise tilting of the platform, aiding in the installation or removal of vehicle components. This feature provides up to two inches of tilt at the front of the platform, helping to compensate for uneven shop floors or difficult fastener locations.

The forcing screws can be adjusted by hand, wrench, or socket, depending on the load applied.



CAUTION! To prevent equipment damage, ensure that the leveler screws are in their lowest position before tilting the platform. Failure to do so may cause the platform to drive into the screws, leading to potential damage.

STABILIZATION FEATURE

If the lift is to be used as a stationary work surface for servicing components, it is equipped with two leveler screws (see Figure 1) to help stabilize the platform.

- Once the desired tilt or platform position is reached, thread both leveler screws inward until they meet the bottom of the platform.
- Tighten finger-tight only to provide two extra points of contact, ensuring a more stable platform.

OPERATING THE LIFTING TABLE FOR REMOVING VEHICLE COMPONENTS

1. Always follow our recommended service procedure.
2. Position the lifting table under the vehicle and connect electrical power to the power unit.
3. Press the UP button to raise the lifting table close to the load.
4. Remove any remaining bolts from the vehicle component.
5. Press the DOWN button to lower the table to its lowest position.
6. Move the lift and load out from under the vehicle.

OPERATING THE LIFTING TABLE TO INSTALL VEHICLE COMPONENTS

1. Position the lift under the vehicle chassis.
2. Align the component in the correct position and press the UP button to raise the lift.
3. Always follow our recommended service procedure for installing the component.

ELECTRICAL-HYDRAULIC PUMP SAFETY INSTRUCTIONS

1. Do not exceed the hydraulic pressure rating noted on the pump data plate or tamper with the internal high-pressure relief valve. Exceeding the rated pressure may cause personal injury.
2. Before replenishing the fluid level, fully retract the system to prevent overfilling the pump reservoir. Overfilling can create excess reservoir pressure when cylinders are retracted, leading to potential personal injury.

CONDUCT IN AN EMERGENCY

1. Release the UP/Down push-button immediately.
2. Switch off the main power source or remove the plug.



NOTICE!

When using the following accessories:

- Rollers

- Conveyor Belts
- Other transport facilities

The safety devices on the machine must not be bypassed or made non-operational through their use.

The use of these accessories may enlarge the danger zone, increasing the potential for hazards.

3.3. Cleaning and maintenance

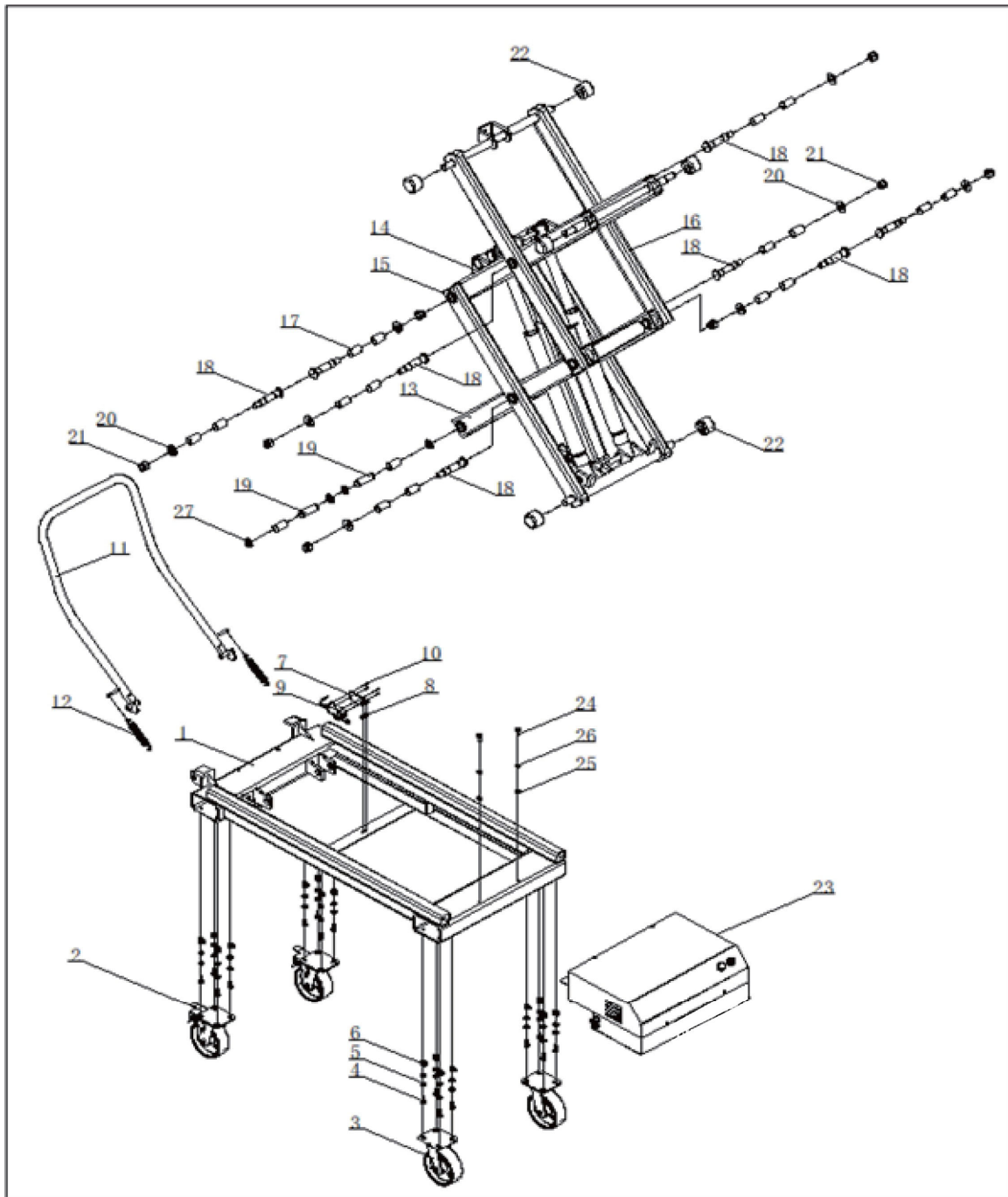
- a) Unplug the mains plug and allow the device to cool completely before each cleaning, adjustment or replacement of accessories, or if the device is not being used.
- b) Use only non-corrosive cleaners to clean the surface.
- c) After cleaning the device, all parts should be dried completely before using it again.
- d) Store the unit in a dry, cool place, free from moisture and direct exposure to sunlight.
- e) Do not spray the device with a water jet or submerge it in water.
- f) The device must be regularly inspected to check its technical efficiency and spot any damage.
- g) Use a soft, damp cloth for cleaning.
- h) Do not use sharp and/or metal objects for cleaning (e.g. a wire brush or a metal spatula) because they may damage the surface material of the appliance.
- i) Do not clean the device with an acidic substance, agents of medical purposes, thinners, fuel, oils or other chemical substances because it may damage the device.

DISPOSING OF USED DEVICES

Do not dispose of this device in municipal waste systems. Hand it over to an electric and electrical device recycling and collection point. Check the symbol on the product, instruction manual and packaging. The plastics used to construct the device can be recycled in accordance with their markings. By choosing to recycle you are making a significant contribution to the protection of our environment.

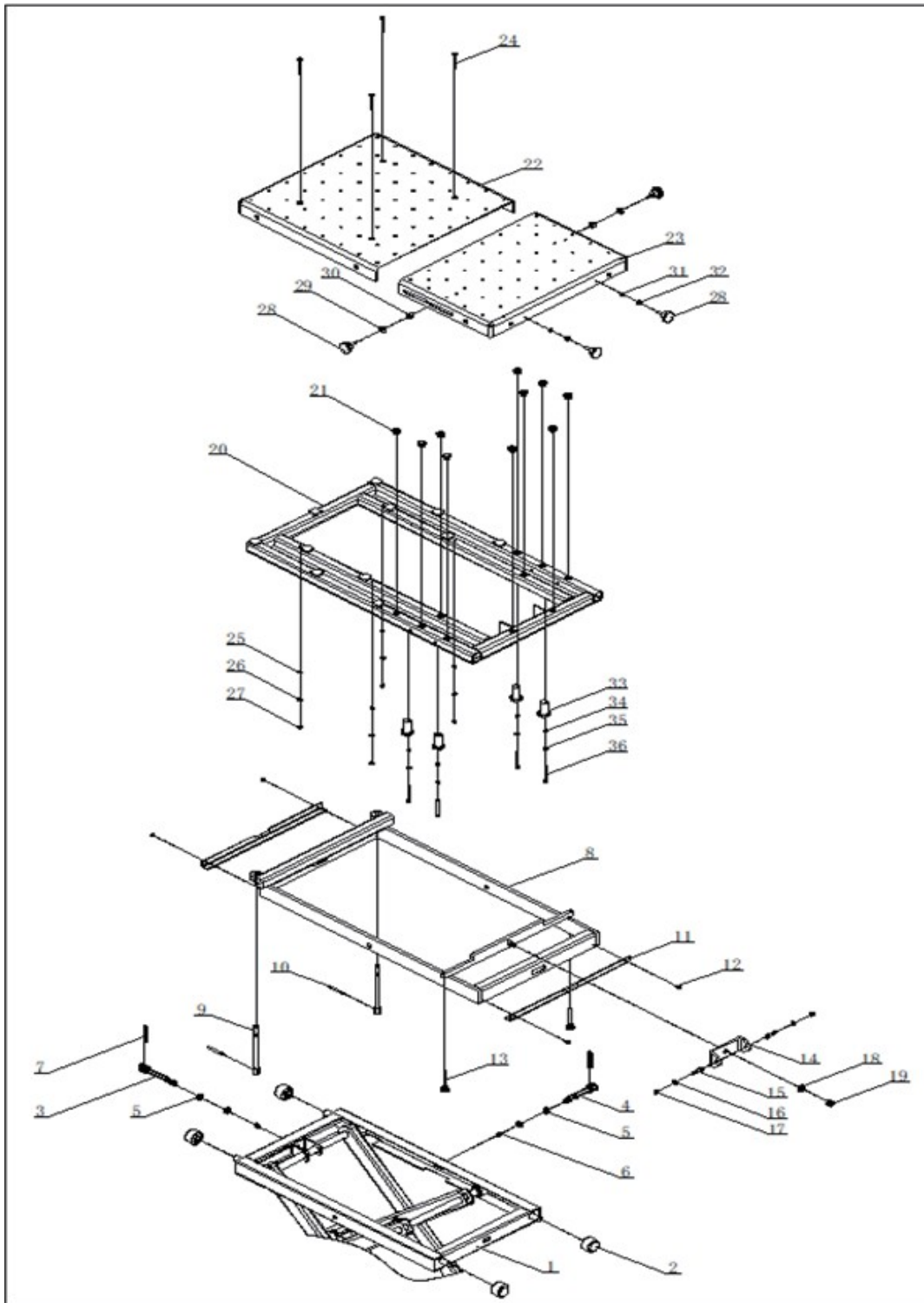
Contact local authorities for information on your local recycling facility.

3.4. Parts diagram



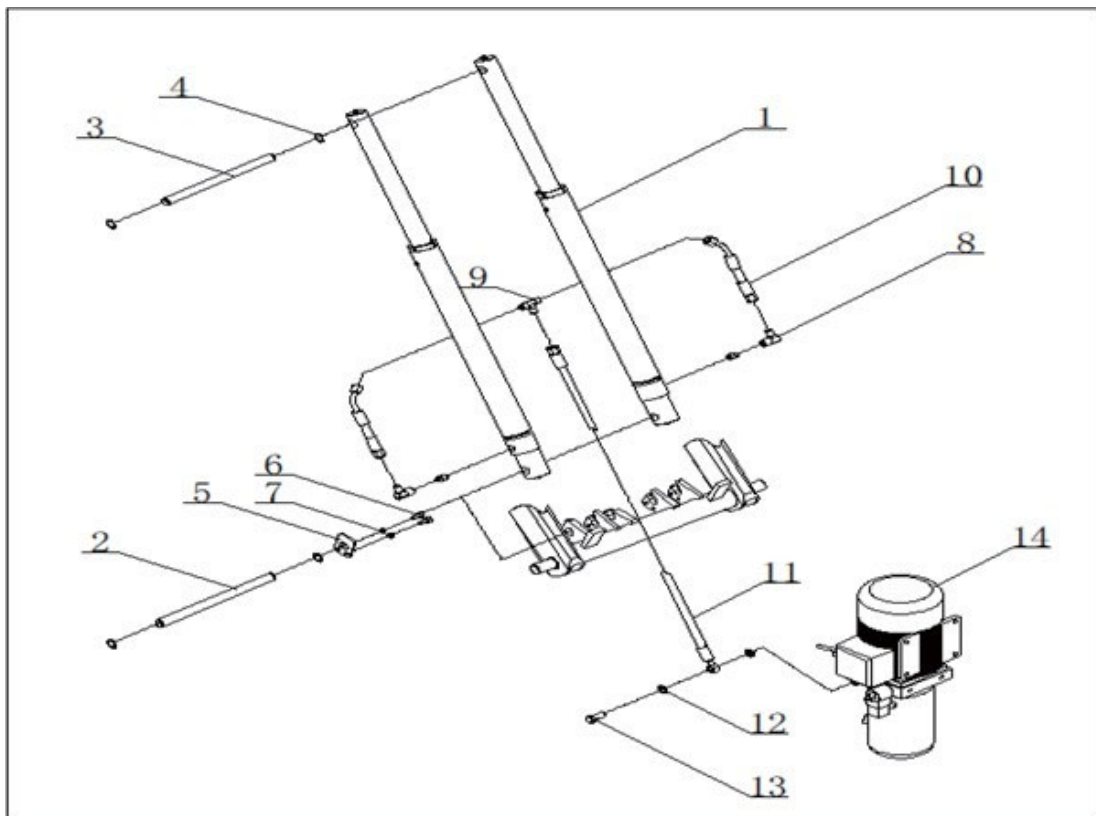
No.	Description	Qty.
1	Base Weld	1
2	Universal casters with brakes	2
3	Wheel	2
4	Bolt M10*25	16
5	Plain washer	32
6	Screw M10	16
7	Angle iron	1
8	Bolt M6*10	2
9	Limit switch	1
10	Bolt M5*12	4

11	Handle	1
12	Spring	2
13	scissors 01	1
14	scissors 02	1
15	scissors 03	1
16	scissors 04	1
17	Composite bushing P28×25×50	18
18	Axle for scissors	8
19	Axle for base	2
20	Washer	8
21	Self-locking screw	8
22	Rolling wheel	6
23	Pump	1
24	Bolt M10*20	2
25	Plain washer 10	2
26	Spring washer	2
27	Shaft ring 25	4



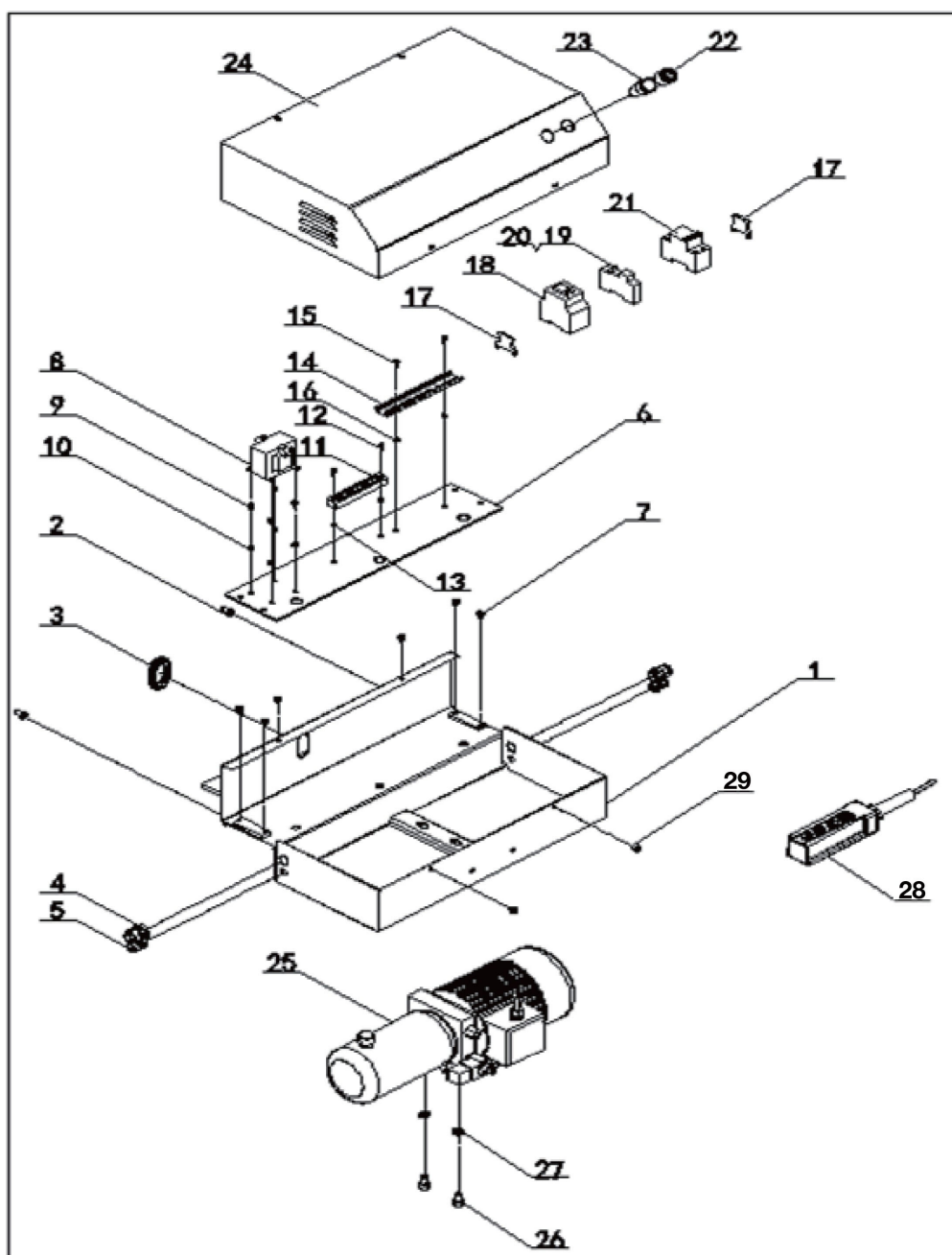
No.	Description	Qty.
1	Frame weldment	1
2	Rolling wheel	4
3	Long Bar weldment	1
4	Short bar weldment	1
5	Bearing 51101	4
6	Self-locking M12	2
7	Pin 10*80	2
8	Platform weldment (down)	1

9	bolt	2
10	Pin 10*80	2
11	Angel iron (small)	2
12	Bolt M6*10	4
13	bolt	2
14	U board	1
15	Bolt 13*25	2
16	Plain washer 10	2
17	Self-locking screw M10	2
18	Plain washer 18	1
19	Self-locking screw M16	1
20	Platform weldment (up)	1
21	Bearing	10
22	Platform A	1
23	Platform B	1
24	Bolt M8*80	4
25	Spring washer 8	4
26	Plain washer 8	4
27	Nut M8	4
28	Handle	4
29	Big washer 10	2
30	Sleeve C	2
31	Spring washer 10	2
32	Self-locking screw M10	2
33	Sleeve	4
34	Spring washer 8	4
35	Plain washer 8	4
36	Bolt M8*80	4

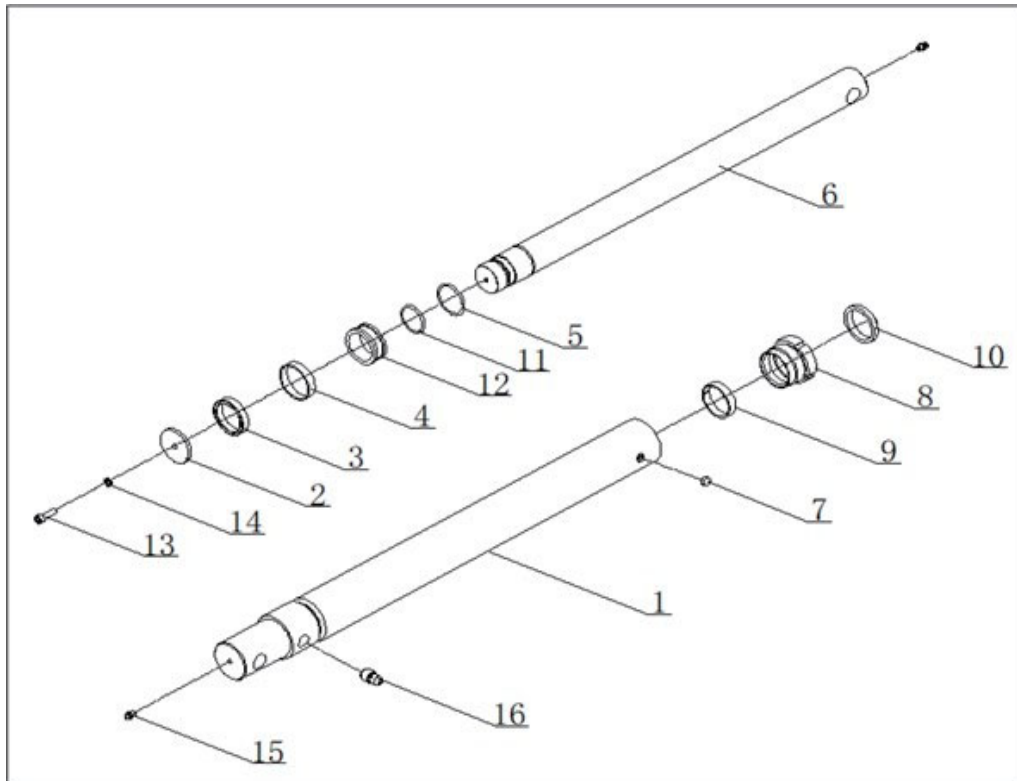


No.	Description	Qty.
-----	-------------	------

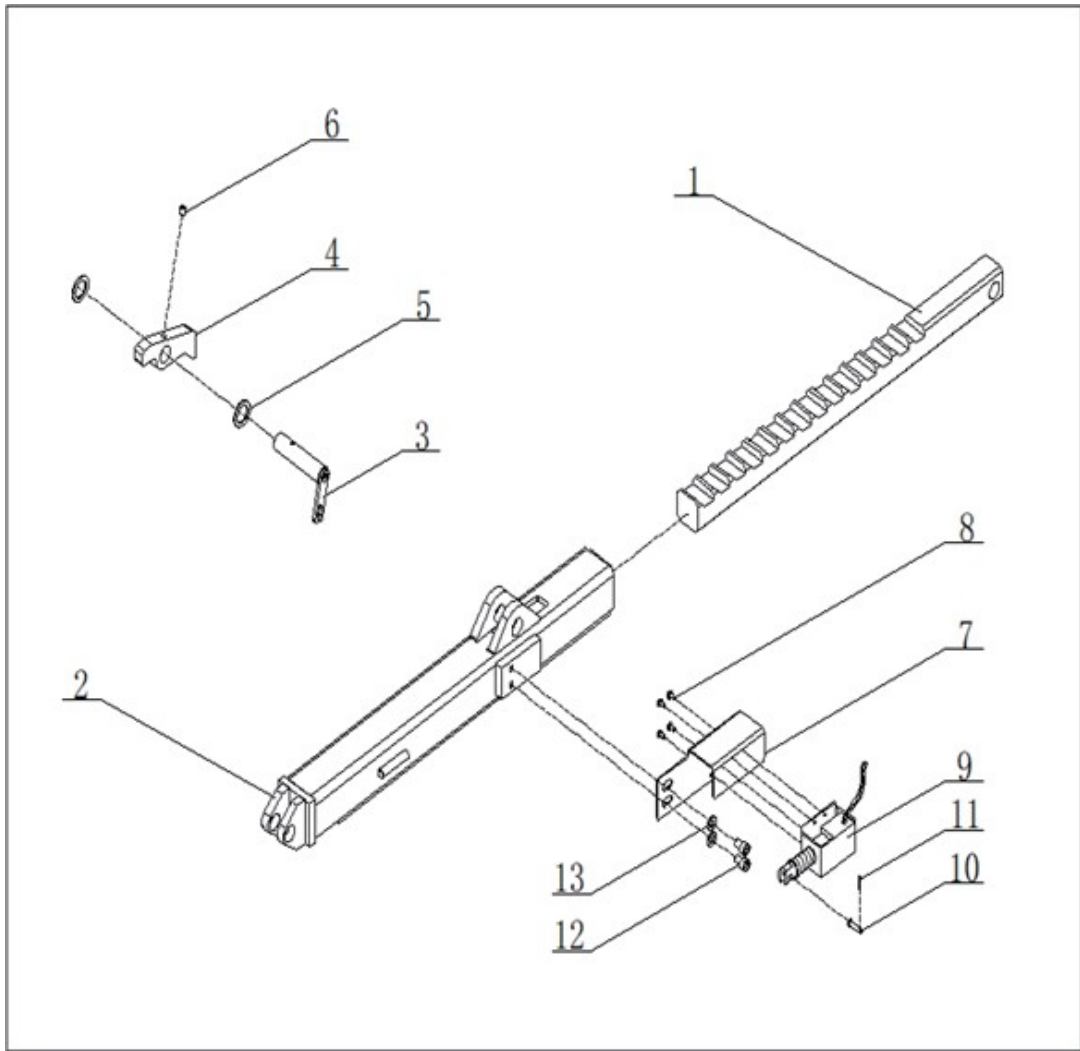
1	Cylinder (complete)	2
2	Cylinder axle	1
3	Cylinder axle A	1
4	Shaft ring 19	4
5	Fix board	1
6	Bolt M8*16	2
7	Spring washer 8	2
8	connection	2
9	T connection	1
10	Oil hose l=240	2
11	Oil hose L=1100	1
12	Composite bush	2
13	Short compression bolt	1
14	Pump 0.75KW	1



No.	Description	Qty.
1	Pump box	1
2	Bolt M8*16	2
3	Oil hose cover	1
4	Wire grip PG 13.5	2
5	Wire grip PG 7	2
6	Installation board of electronic	1
7	screw M6x8	4
8	Transformer	1
9	Cross-recessed screw M5x8	4
10	Nut M5	4
11	strand oscillator	1
12	screw M4x10	2
13	Nut M4	2
14	Rail 140mm	1
15	Bolt M4*10	2
16	Nut M4	2
17	Yellow-green terminal	2
18	AC contactor	1
19	Fuse base	1
20	Fuse 6A	1
21	Breaker	1
22	Breaker AC24V	1
23	Indicator light (AC220V)	1
24	Pump cover	1
25	Pump 0.75KW	1
26	Bolt M10*16	2
27	Plain washer 10	2
28	Bolt M6*8	4
29	button	1



No.	Description	Qty.
1	Cylinder body	2
2	Washer	2
3	seal	2
4	T47 wearing ring	2
5	Spring ring 38	2
6	Piston rod	2
7	Pneumostome ϕ 10	2
8	Guide sleeve	2
9	T47 wear ring	2
10	Dustproof ring	2
11	O ring ϕ 30 \times 2.65	2
12	Piston	2
13	Bolt M6*20	2
14	Spring washer 6	2
15	Oil cup M6*1	4
16	Throttle valve	2



No.	Description	Qty.
1	Gear	1
2	Electrical unlocking system weldment	1
3	Electrical Axle	1
4	brake ratchet	1
5	Washer	2
6	Bolt M8*10	1
7	Solenoid seat	1
8	Bolt M4*8	4
9	Solenoid	1
10	Pin roll-B 5*22	1
11	PIN 1.2*8	1
12	Bolt M8*12	2
13	Plain washer 8	2

Umwelt – und Entsorgungshinweise

Hersteller an Verbraucher

Sehr geehrte Damen und Herren,

gebrauchte Elektro – und Elektronikgeräte dürfen gemäß europäischer Vorgaben **[1]** nicht zum unsortierten Siedlungsabfall gegeben werden, sondern müssen getrennt erfasst werden. Das Symbol der Abfalltonne auf Rädern weist auf die Notwendigkeit der getrennten Sammlung hin. Helfen auch Sie mit beim Umweltschutz. Sorgen Sie dafür, dieses Gerät, wenn Sie es nicht mehr weiter nutzen wollen, in die hierfür vorgesehenen Systeme der Getrennsammlung zu geben.



In Deutschland sind Sie gesetzlich **[2]** verpflichtet, ein Altgerät einer vom unsortierten Siedlungsabfall getrennten Erfassung zuzuführen. Die öffentlich – rechtlichen Entsorgungsträger (Kommunen) haben hierzu Sammelstellen eingerichtet, an denen Altgeräte aus privaten Haushalten ihres Gebietes für Sie kostenfrei entgegengenommen werden. Möglicherweise holen die rechtlichen Entsorgungsträger die Altgeräte auch bei den privaten Haushalten ab.

Bitte informieren Sie sich über Ihren lokalen Abfallkalender oder bei Ihrer Stadt – oder Gemeindeverwaltung über die in Ihrem Gebiet zur Verfügung stehenden Möglichkeiten der Rückgabe oder Sammlung von Altgeräten.

[1] RICHTLINIE 2002/96/EG DES EUROPÄISCHEN PARLAMENTS UND DES RATES
ÜBER ELEKTRO – UND ELEKTRONIK – ALTGERÄTE

[2] Gesetz über das Inverkehrbringen, die Rücknahme und die umweltverträgliche Entsorgung
von Elektro – und Elektronikgeräten (Elektro – und Elektronikgerätegesetz – ElektroG).

Utylizacja produktu

Produkty elektryczne i elektroniczne po zakończeniu okresu eksploatacji wymagają segregacji i oddania ich do wyznaczonego punktu odbioru. Nie wolno wyrzucać produktów elektrycznych razem z odpadami gospodarstwa domowego. Zgodnie z dyrektywą WEEE 2012/19/UE obowiązującą w Unii Europejskiej, urządzenia elektryczne i elektroniczne wymagają segregacji i utylizacji w wyznaczonych miejscach. Dbając o prawidłową utylizację, przyczyniasz się do ochrony zasobów naturalnych i zmniejszasz negatywny wpływ oddziaływania na środowisko, człowieka i otoczenie. Zgodnie z krajowym prawodawstwem, nieprawidłowe usuwanie odpadów elektrycznych i elektronicznych może być karane!

For the disposal of the device please consider and act according to the national and local rules and regulations.

CONTACT

expondo Polska sp. z o.o. sp. k.

ul. Nowy Kisielin – Innowacyjna 7
66-002 Zielona Góra | Poland, EU

e-mail: info@expondo.com