



USER MANUAL

BEDIENUNGSANLEITUNG

INSTRUKCJA OBSŁUGI

NÁVOD K POUŽITÍ

MANUEL D'UTILISATION

ISTRUZIONI PER L'USO

MANUAL DE INSTRUCCIONES

HASZNÁLATI ÚTMUTATÓ BRUGSANVISNINGENKEL KÄYTTÖOHJE GEBRUIK

SAANWIJZING

BRUKSANVISNING

INSTRUÇÕES DE UTILIZAÇÃO

POUŽÍVATEĽSKÁ PRÍRUČKA

РЪКОВОДСТВО ЗА УПОТРЕБА

ΟΔ ΗΓΙΕΣ ΧΡΗΣΗΣ

UPUTE ZA UPORABU

NAUDOJIMO INSTRUKCIJA

MANUAL DE UTILIZARE

NAVODILA ZA UPORABO

PLATE COMPACTOR

DE	Produktname	Rüttelplatte
EN	Product name	Plate compactor
PL	Nazwa produktu	Zagęszczarka płytowa
CZ	Název výrobku	Vibrační deska
FR	Nom du produit	Plaque vibrante
IT	Nome del prodotto	Piastra vibrante
ES	Nombre del producto	Placa compactadora
HU	Termék neve	Tömörítőlemez
DA	Produktnavn	Pladekomprimeringsmaskine
FI	Tuotteen nimi	Laattatampuri
NL	Productnaam	Trilplaat
NO	Produktnavn	Platekomprimeringsmaskin
SE	Produktnamn	Plattkomprimerare
PT	Nome do produto	Compactadora de placa
SK	Názov produktu	Vibračná doska
BG	Име на продукта	Вибрационна плоча
EL	Όνομα προϊόντος	Συμπιεστής πλάκας
HR	Naziv proizvoda	Vibracijska ploča
LT	Produkto pavadinimas	Plokštinis vibracinis
RO	Numele produsului	Placă compactoare
SL	Ime izdelka	Vibratorska plošča
DE Modell EN Product model PL Model produktu CZ Model výrobku FR Modèle IT Modello ES Modelo HU Modell DA Model FI Tuotteen malli NL Productmodel NO Produktmodell SE Produktmodell PT Modelo do produto SK Model BG Модел на продукт EL Μοντέλο προϊόντος HR Model proizvoda LT : Gaminio modelis RO : Model de produs SL : Model izdelka		MSW-CCTR-8PU
DE Hersteller EN Manufacturer PL Producent CZ Výrobce FR Fabricant IT Produttore ES Fabricante HU Termelő DA Producent FI Valmistaja NL Producent NO Produsent SE Tillverkare PT Fabricante SK Výrobca BG Производител EL Κατασκευαστής HR Proizvođač LT Gamintojas RO Producător SL Proizvajalec		expondo Polska sp. z o.o. sp. k.
DE Anschrift des Herstellers EN Manufacturer Address PL Adres producenta CZ Adresa výrobce FR Adresse du fabricant IT Indirizzo del produttore ES Dirección del fabricante HU A gyártó címe DA Producentens adresse FI Valmistajan osoite NL Adres producent NO Produsentens adresse SE Tillverkarens adress PT Endereço do fabricante SK Adresa výrobce BG Адрес на производителя EL : Διεύθυνση κατασκευαστή HR Adresa proizvođača LT Gamintojo adresas RO Adresa producătorului SL Naslov proizvajalca		ul. Nowy Kisielin – Innowacyjna 7, 66-002 Zielona Góra Poland, EU



This User Manual has been translated using machine translation. We have made every effort to ensure the translation is accurate, but please note that automated translations are not perfect and are not meant to replace human translators. The official version of the User Manual is in English. Any differences between the translated version and the original English are not legally binding. If you have any questions about the accuracy of the translation, please refer to the English version, which is the official reference. More language versions are available upon request via info@expondo.com.

Technical data

Parameter description	Parameter value
Product name	Plate compactor
Model	MSW-CCTR-8PU
Engine	Loncin G200F
Power [HP]	6.5
Centrifugal Force [kN]	12
Vibrating Frequency [VPM]	4900
Max travel Speed [m/min]	20
Compaction depth [cm]	28
Dimensions [width x depth x height; mm]	370 x 1080 x 920
Weight [kg]	65.8

1. General description

The user manual is designed to assist in the safe and trouble-free use of the device. The product is designed and manufactured in accordance with strict technical guidelines, using state-of-the-art technologies and components. Additionally, it is produced in compliance with the most stringent quality standards.

DO NOT USE THE DEVICE UNLESS YOU HAVE THOROUGHLY READ AND UNDERSTOOD THIS USER MANUAL.

To increase the product life of the device and to ensure trouble-free operation, use it in accordance with this user manual and regularly perform maintenance tasks. The technical data and specifications in this user manual are up to date. The manufacturer reserves the right to make changes associated with quality improvement. The device is designed to reduce noise emission risks to a minimum, taking into account technological progress and noise reduction opportunities.

Legend



The product satisfies the relevant safety standards.



Read instructions before use.



The product must be recycled.



WARNING! or **CAUTION!** or **REMEMBER!** Applicable to the given situation.
(general warning sign)



Use ear protection. Exposure to loud noise may result in hearing loss.



Wear protective goggles.



Wear protective gloves.



Wear foot protection.



ATTENTION! Loud noise warning!



ATTENTION! Fire hazard - flammable materials!



WARNING! Toxic substances, danger of poisoning!



ATTENTION! Hand crush hazard!



Do not touch!



ATTENTION! Hot surface, risk of burns!



No smoking in the vicinity of the appliance. The appliance contains flammable substances.



PLEASE NOTE! Drawings in this manual are for illustration purposes only and in some details may differ from the actual product.

2. Usage safety



ATTENTION! Read all safety warnings and all instructions. Failure to follow the warnings and instructions may result in serious injury or even death.

The terms "device" or "product" are used in the warnings and instructions to refer to:

Plate compactor

2.1. Safety in the workplace

- a) Make sure the workplace is clean and well lit. A messy or poorly lit workplace may lead to accidents. Try to think ahead, observe what is going on and use common sense when working with the device.
- b) If you discover damage or irregular operation, immediately switch the device off and report it to a supervisor without delay.
- c) If you are unsure about whether the device is operating correctly or if you find damage, please contact the manufacturer's service centre.
- d) Only the manufacturer's service centre may make repairs to the device. Do not attempt to make repairs yourself!

- e) Children or unauthorised persons are forbidden to enter a work station. A distraction may result in loss of control over the device.
- f) Use the device in a well-ventilated space.
- g) The device produces dust and debris during operation. It is important to protect bystanders from their harmful effects.
- h) Regularly inspect the condition of the safety labels. If the labels are illegible, they must be replaced.
- i) Please keep this manual available for future reference. If this device is passed on to a third party, the manual must be passed on with it.
- j) Keep packaging elements and small assembly parts in a place not available to children.
- k) Keep the device away from children and animals.



Remember! When using the device, protect children and other bystanders.

2.2. Personal safety

- a) Do not use the device when tired, ill or under the influence of alcohol, narcotics or medication which can significantly impair the ability to operate the device.
- b) The machine may be operated by physically fit persons who are able to handle the machine, are properly trained, who have reviewed this operating manual and have received training in occupational health and safety.
- c) When working with the device, use common sense and stay alert. Temporary loss of concentration while using the device may lead to serious injuries.
- d) Use personal protective equipment as required for working with the device, specified in section 1 "Legend". The use of correct and approved personal protective equipment reduces the risk of injury.
- e) Do not overestimate your abilities. When using the device, keep your balance and remain stable at all times. This will ensure better control over the device in unexpected situations.
- f) Do not wear loose clothing or jewellery. Keep hair, clothes and gloves away from moving parts. Loose clothing, jewellery or long hair may get caught in moving parts.
- g) Remove all adjusting tools or spanners before turning the device on. A tool or spanner left in the revolving part of the device may cause injury.
- h) Use eye, ear and respiratory protection.
- i) The device is not a toy. Children must be supervised to ensure that they do not play with the device.
- j) Do not put your hands or other items inside the device while it is in use!
- k) Use protective glasses. When working in a dusty environment, additionally wear a dust mask.
- l) Take special care when operating the unit on inclines.
- m) Plate compactors are heavy units and should be positioned by two people of appropriate strength. Using the lifting handles provided on the machine, along with correct lifting techniques.

2.3. Safe device use

- a) Do not overload the device. Use the appropriate tools for the given task. A correctly-selected device will perform the task for which it was designed better and in a safer manner.

- b) Do not use the device if the "ON/OFF" switch does not function properly (does not switch the device on and off). Devices which cannot be switched on and off using the "ON/OFF" switch are hazardous, should not be operated and must be repaired.
- c) When not in use, store in a safe place, away from children and people not familiar with the device who have not read the user manual. The device may pose a hazard in the hands of inexperienced users.
- d) Keep the device in perfect technical condition. Before each use check for general damage, especially check moving components for cracked parts or elements, and for any other conditions which may impact the safe operation of the device. If damage is discovered, hand over the device for repair before use.
- e) Keep the device out of the reach of children.
- f) Device repair or maintenance should be carried out by qualified persons, only using original spare parts. This will ensure safe use.
- g) To ensure the operational integrity of the device, do not remove factory-fitted guards and do not loosen any screws.
- h) When transporting and handling the device between the warehouse and the destination, observe the occupational health and safety principles for manual transport operations which apply in the country where the device will be used.
- i) Avoid situations where the device stops working during use due to excessive loading. This may result in overheating of the drive elements and damage to the device.
- j) Do not touch articulated parts or accessories unless the device has been disconnected from the power source.
- k) Do not leave this appliance unattended while it is in use.
- l) Clean the device regularly to prevent stubborn grime from accumulating.
- m) Do not cover the air intake and outlet.
- n) It is forbidden to interfere with the structure of the device in order to change its parameters or construction.
- o) Keep the device away from sources of fire and heat.
- p) Do not cover the ventilation openings!
- q) NOTE: During operation, some elements of the device become very hot – scalding hazard!
- r) Do not use the device in the rain.
- s) Keep handles dry, clean and free of oil or grease.
- t) Add oil to the correct level before starting the unit. If the oil level is too low the engine will not start or may shut down.
- u) Any leakage of operating oils from the unit must be reported to the relevant services or comply with the legal requirements in the area of use.
- v) The engine exhaust contains poisonous carbon monoxide. Being in an environment containing carbon monoxide can lead to unconsciousness and even death. Do not run the engine in an enclosed area.
- w) Protect the motor from heat, sparks and flame. Do not smoke near the motor!
- x) Petrol is highly flammable and explosive. The engine should be switched off and allowed to cool down before refuelling.
- y) Warning! Risk of engine damage from incorrect fuel.

- z) The specified vibrations emission was measured using standard measurement methods. Vibrations emissions may change if the device is used in different surroundings.
- aa) Do not increase the governed no-load engine speed beyond 3,500 RPM. Exceeding this limit may cause personal injury and machine damage.
- bb) Warning! Internal combustion engine exhaust contains carbon monoxide, which can be fatal in confined spaces. Always operate the machine in a well-ventilated area.



ATTENTION! Despite the safe design of the device and its protective features, and despite the use of additional elements protecting the operator, there is still a slight risk of accident or injury when using the device. Stay alert and use common sense when using the device.

3. Use guidelines

The product is designed for compacting the ground by transmitting vibration through a vibrating plate, powered by a single motor in the vibrator case. It is used to create a smooth and stable surface, making it suitable for applications such as soil levelling, asphalt finishing, trench compaction, road maintenance, landscaping, brick paving, and driveway toppings.

The product is not suitable for applications requiring deep or heavy compaction. It may struggle to move forward on water-saturated soils, especially clay, and is less effective on ground containing large stones due to its limited compacting force. For deeper compaction, it is recommended to use a Tamping Rammer, Vibro Compactor, or Vibration Roller.

The user is liable for any damage resulting from unintended use of the device.

3.1. Device description

BASIC STRUCTURE

The upper part consists of the power source, handle, belt cover, and guard hook, all fixed to the engine base. The engine base is then mounted onto the vibrating plate using shock-absorbing rubber. The lower part comprises the vibrating plate and the vibrator unit, which houses an eccentric rotary shaft. Power is transmitted from the centrifugal clutch on the engine output shaft to the eccentric rotary shaft via a V-belt.

Power Transfer

The air-cooled single-cylinder engine serves as the power source, with the centrifugal clutch mounted on the engine output shaft. Both petrol engines (2-cycle, 4-cycle) and diesel gasoline engines can be used as options.

The centrifugal clutch engages as the engine speeds up, and once the engine RPM is reduced to a suitable level, it begins the compaction process. The engine's rotational power is transmitted from the V-pulley, integrated with the clutch drum, to the vibrator pulley through the V-belt.

The vibrator pulley drives an eccentric rotor shaft located within the vibrator case. The resulting vibration from the eccentric rotor is transferred to the compaction plate, enabling the machine's weight to compact the ground.

Functions and Controls

- **Motor:**

The motor is controlled via an ON/OFF switch or push button, located below the fuel tank. The motor speed is controlled by a remote throttle lever mounted on the machine's handle. Honda and Kama motors are equipped with an oil alert system that stops the motor or prevents starting when the crankcase oil level falls below a safe limit.

- **Drive Belt:**

The tension of the drive belt is adjustable. To adjust, loosen the four nuts securing the motor to the baseplate. Then, adjust the set screws that bear against the motor crankcase to achieve the desired belt tension. After adjustment, ensure the four nuts and the set screw locknuts are properly tightened.

Accessories

- **Transport Trolley:**

Facilitates easy handling by hooking into the baseplate. It is fitted with 200 mm rubber tyres for smooth transportation.

3.2. Preparing for use



NOTICE!

- Proper moisture content in the soil is essential for effective compaction. Water acts as a lubricant, helping soil particles bind together. Insufficient moisture leads to inadequate compaction, while excessive moisture creates water-filled voids that weaken the soil's load-bearing capacity.
- Use unleaded petrol and ensure the fuel is free from contamination.
- Position yourself at the handle end of the machine, keeping the vibrator at the opposite end.
- Start the engine using the recoil starter. If equipped with an ON/OFF switch, ensure it is turned ON before starting.
- Increase the engine speed to maximum using the throttle lever before beginning compaction.
- Firmly grasp the handle with both hands to control the forward motion.
- Steer the machine by moving the handle sideways to the right or left.
- Maintain stable footing to avoid slipping and losing control while starting or operating the machine.

BEFORE USE

1. Thoroughly remove all dirt, mud, and debris from the unit before operation. Pay special attention to the bottom face of the vibrating plate and the areas near the engine cooling air inlet, carburetor, and air cleaner.
2. Check all bolts and screws to ensure they are securely tightened. Loose bolts and screws may cause damage to the unit.
3. Inspect the V-belt for proper tension. The normal slack should be approximately 10-15mm (1/2") when pressed at the midpoint between the two sheaves.
 - Excessive belt play may result in reduced impact force or erratic vibration, leading to machine damage.
4. Check the engine oil level. If the level is low, refill with the recommended motor oil (refer to the table and Fig-1 below).

Season & Temperature	Recommended Oil Grade
Spring, Summer, or Autumn (+40°F to +120°F)	SAE 30
Winter (+15°F to +40°F)	SAE 20
Extreme Cold Weather (Below +15°F)	SAE 10W-30

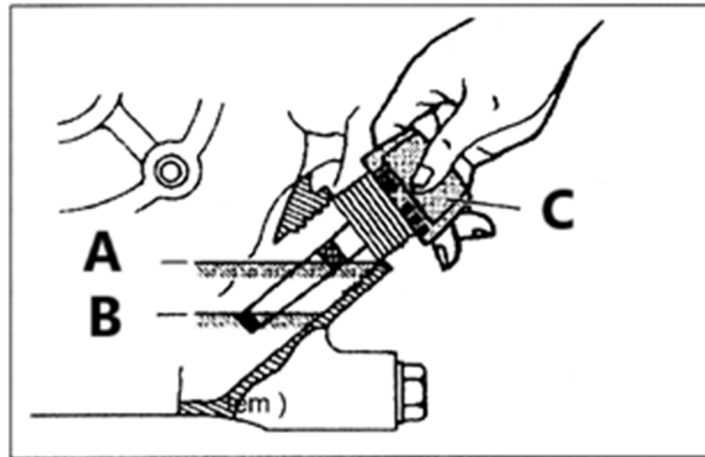


Fig-1

5. Inspect the oil level in the vibrator assembly by removing the oil plug. Ensure the compactor is level when checking. The oil should reach the oil plug.
 - Replace the oil every month or every 200 hours of operation.

**IMPORTANT!**

- Use SAE motor oil as specified.
 - When changing the oil, drain the old oil by tilting the unit.
 - For easier drainage, change the oil while it is still warm.
6. Use regular-grade gasoline for the engine.
 - When refueling, always use a fuel filter to prevent contamination.

3.3. Device use

STARTING THE ENGINE

1. Gasoline Engine

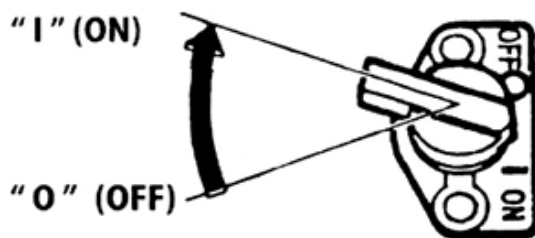


Fig-2

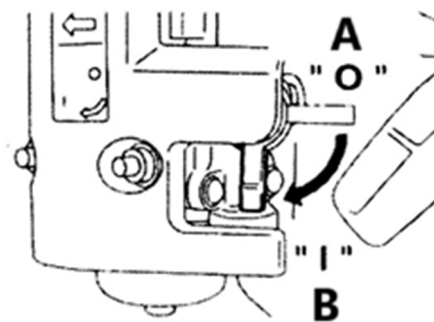


Fig-3

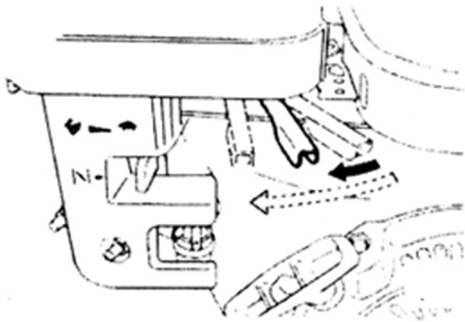


Fig-4

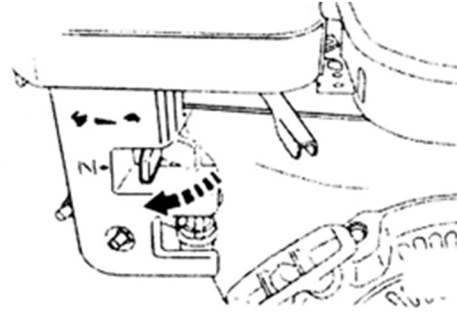


Fig-5

- a) Turn the STOP SWITCH clockwise to the "1" (ON) position (Fig-2).
- b) Open the fuel cock (Fig-3).
- c) Move the speed control lever to 1/3 to 1/2 of the way toward the high-speed position (Fig-4).
- d) Adjust the choke lever based on the engine and ambient temperature:
 - If the engine is cold or the ambient temperature is low, fully close the choke lever.
 - If the engine is warm or the ambient temperature is high, open the choke lever halfway or fully (Fig-5).
- e) Pull the starter handle slowly until resistance is felt (compression point), then return the handle to its original position and pull swiftly.
 - Do not pull the rope all the way out.
 - After the engine starts, allow the starter handle to return to its original position while still holding it.

2. Diesel Engine

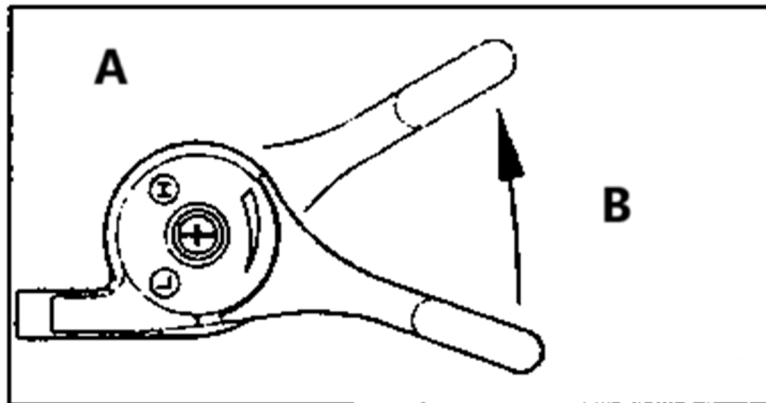


Fig-6

A- Throttle lever

B- Open by about 30 degrees

Turn the throttle lever to the START position (open by about 30 degrees) (Fig-6).

OPERATE THE STARTER

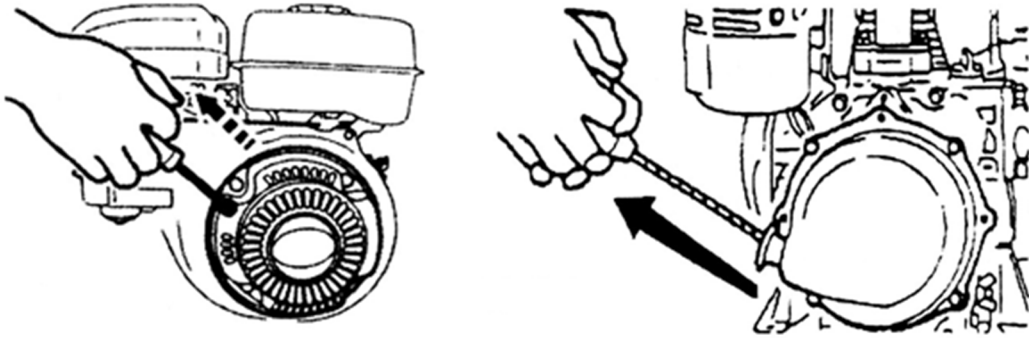


Fig-7

For recoil starters:

- Slowly pull the starter knob until you feel strong resistance (compression point).
- Continue pulling further until the resistance decreases.
- Slowly return the starter knob to its original position (Fig-7).



CAUTION!

- Do not pull the starter rope all the way out.
- Do not quickly release the starter knob after pulling, but slowly return the knob to its original position.

OPERATION

1. Warm-Up Procedure

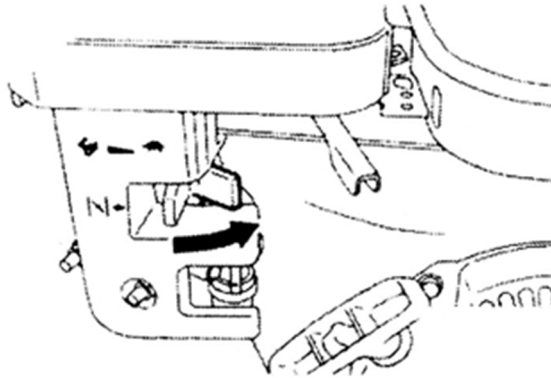


Fig-8

- After starting the engine, be sure to let it warm up for 2 to 3 minutes. This is especially important in cold weather, as it ensures optimal engine performance.
- As the engine warms up, gradually move the choke lever to the OPEN position. (See Fig-8)

2. Speed Control & Clutch Engagement

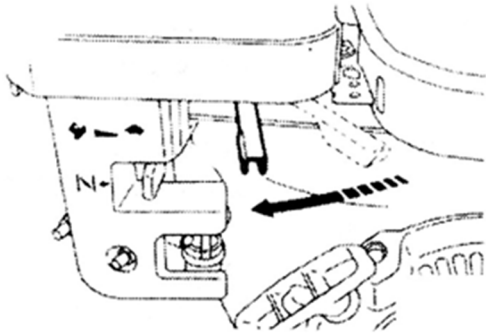


Fig-9

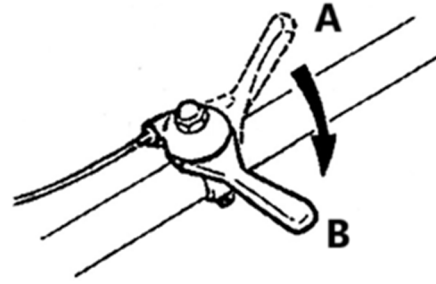


Fig-10

A- Off

B- On

- Move the speed control lever from LOW to HIGH.
- When the engine speed reaches approximately 2,300-2,600 RPM, the centrifugal clutch engages.
- If the engine speed increases too slowly, the clutch may slip.
- DO NOT operate the speed control lever slowly. (See Fig-9,10)

3. Compaction on Asphalt

- When compacting asphalt, apply diesel fuel to the bottom face of the vibrating plate.
- This helps prevent the plate from sticking to the asphalt.

4. Shutting Off the Vibrator

- To stop the vibrator, move the speed control lever from HIGH to LOW.
- DO NOT move the lever slowly.

5. Oil Alert System

- The Oil Alert System prevents engine damage due to low oil levels.
- If the oil level drops below a safe limit, the system will automatically stop the engine (the engine switch remains in the ON position).



NOTICE! If the engine stops and will not restart, check the engine oil level.

6. Shutdown

Emergency shutdown:

- Turn the stop switch to the OFF position immediately.

Normal shutdown:

- Follow the following steps:

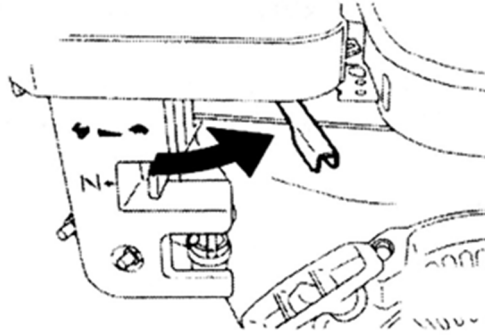


Fig-11

- a) Move the speed control lever to the low-speed position and allow the engine to idle for 2 to 3 minutes before stopping (Fig-11).

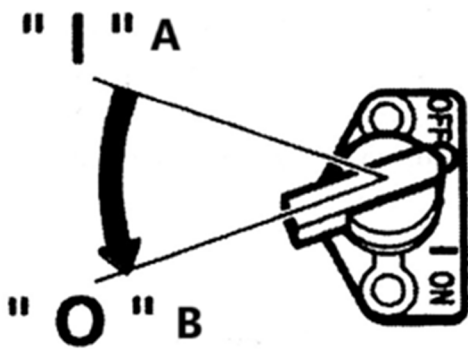


Fig-12

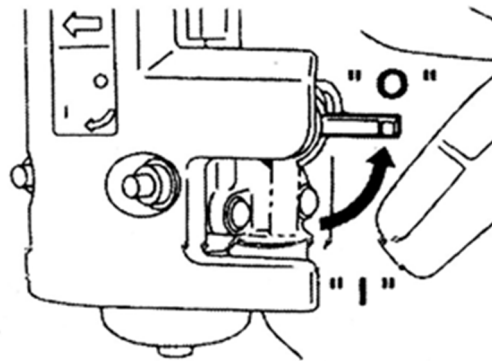


Fig-13

A- On

B- Off

- b) Turn the stop switch to the OFF position (Fig-12).
c) Close the fuel cock (Fig-13).

3.4. Cleaning and maintenance

CAUTION!

- Flammable Liquid: Stop the engine and do not smoke or perform any work in the immediate area while refuelling. Fire or explosion may result from flames or sparks.
- Moving Parts: Shut down the engine before performing any service or maintenance. Contact with moving parts can cause serious injury.
- High Temperature: Allow the machine and engine to cool before performing service or maintenance. Contact with hot components can cause severe burns.

1. Daily maintenance

- A. Remove mud, dirt, and debris from the unit.
- B. Clean the bottom face of the vibrating plate.

- C. Check the air cleaner element and clean if necessary.
- D. Inspect and tighten all nuts, bolts, and screws as needed.
- E. Check the oil level in the motor crankcase.

2. Weekly maintenance

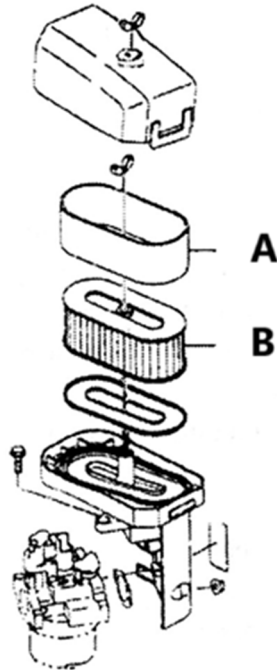


Fig-14

A- Urethane foam

B- Element

A. Air cleaner maintenance (See Fig-14)

A dirty air cleaner element can cause:

- Difficulty starting the engine
- Power loss
- Engine malfunction
- Shortened engine lifespan

To maintain performance, keep the air cleaner element clean.

Urethane foam element

- Remove the element and wash it in kerosene or diesel fuel.
- Saturate it in a mixture of 3 parts kerosene/diesel fuel and 1 part engine oil.
- Squeeze out excess oil and reinstall.

Urethane foam dual structure

- Clean the urethane foam using the same method as above.
- Wash the element in kerosene or diesel fuel.
- Saturate it in a 3:1 mixture of kerosene/diesel fuel and engine oil.

- Shake off excess oil and reinstall.

B. Spark plug maintenance (See Fig-15)

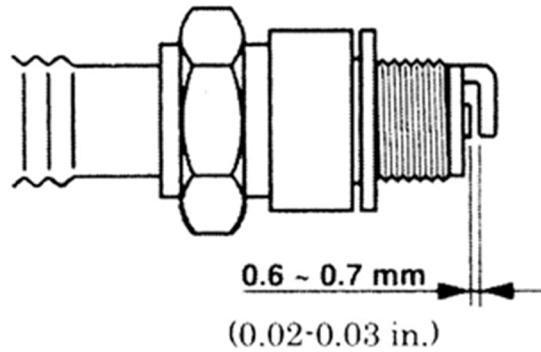


Fig-15

Remove the spark plug, clean it, and adjust the gap to 0.6-0.7 mm (0.02-0.03 in.).

C. Engine oil change (See Fig-16)

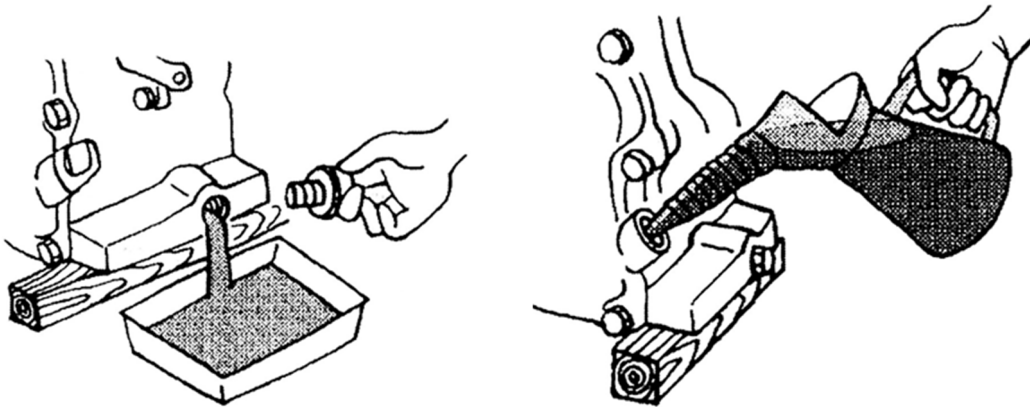


Fig-16

Drain the used motor oil and replace it with the specified oil.

Note: For a new engine, the first oil change must be performed after 20 hours of operation.

3. Monthly maintenance

Change the vibrator assembly oil.

VIBRATOR OIL CHECK

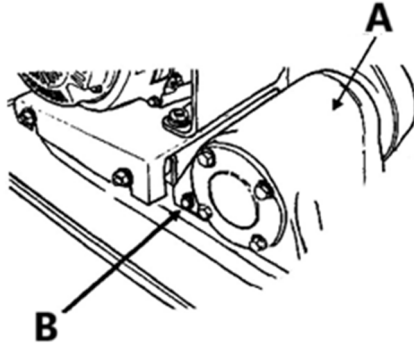


Fig-17

A- Vibrator

B- Vibrator oil plug

1. Positioning the Compactor

- Place the plate compactor on a level surface to ensure accurate oil level measurement.

2. Checking the Oil Level

- Remove the oil plug (vibrator oil gauge) as shown in Fig-17.
- The oil level should reach the plug opening.
- If additional oil is needed, use SAE motor oil as specified in Fig-1 in the above section.

3. Changing the Vibrator Oil

- Remove the drain plug (Fig-17).
- Tilt the compactor to allow oil to drain completely.
- For easier drainage, change the oil while it is warm.

TRANSPORTATION AND STORAGE

1. Ensure the engine is completely turned off before transporting the machine.
2. Securely tighten the fuel tank cap and close the fuel valve to prevent fuel leakage.
3. When transporting by vehicle:
 - Secure the machine properly to prevent movement or tipping.
 - For long-distance or off-road transportation, drain the fuel tank before transport.

When storing the compactor for an extended period after operation, follow these steps:

1. Drain the fuel system

- Completely drain fuel from the fuel tank, fuel pipe, and carburetor to prevent fuel deterioration and clogging.

2. Lubricate the cylinder

- Remove the spark plug and pour a few drops of engine oil into the cylinder.
- Manually rotate the engine several times to ensure the cylinder interior is evenly coated with oil.

3. Clean and store properly

- Wipe the outer surface of the machine with the oil-moistened cloth to prevent rust.
- Cover the unit and store it in a dry, dust-free, and humidity-free environment.

BEARINGS

The following bearings are sealed for durability and minimal maintenance:

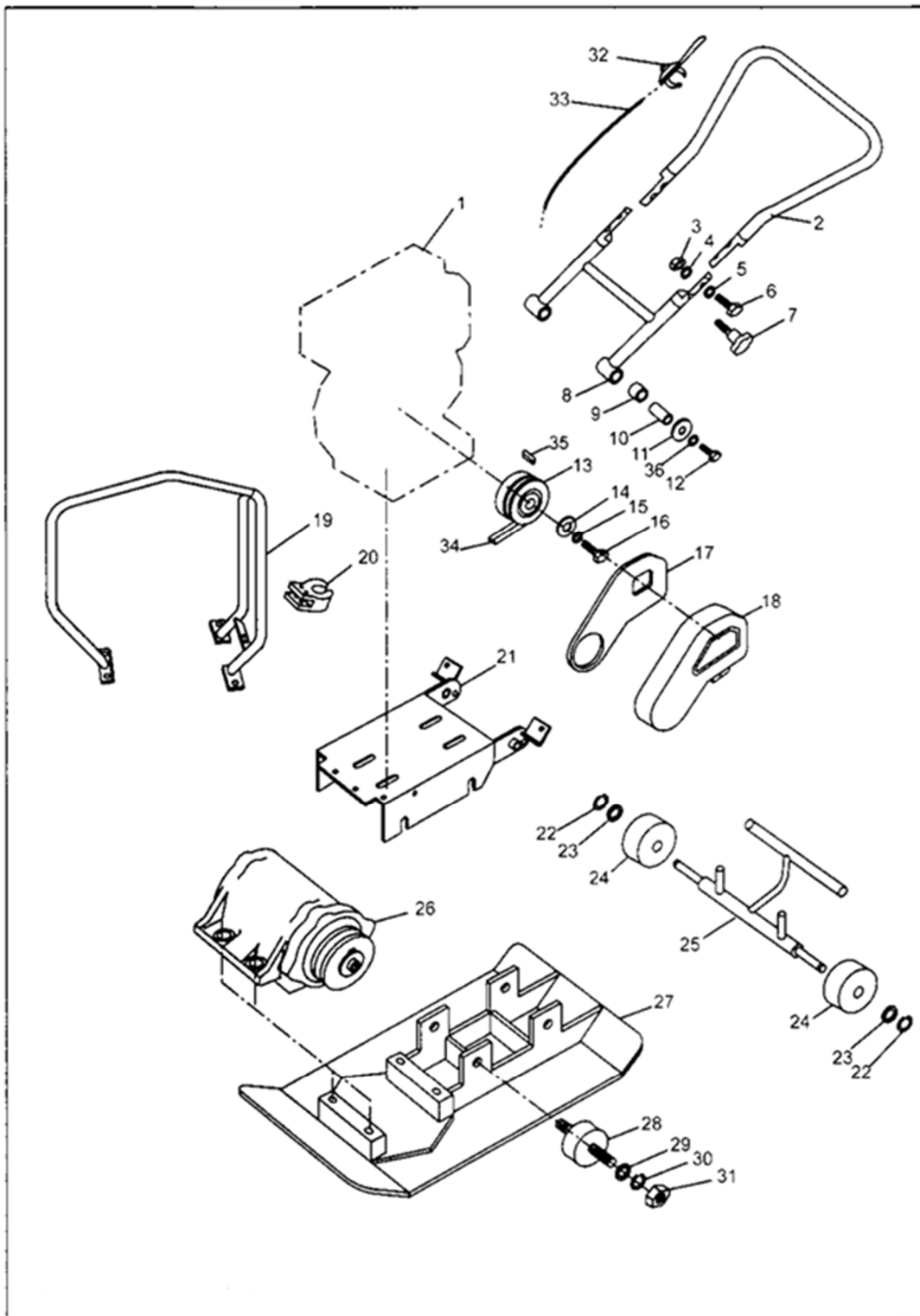
- Centrifugal clutch – Grease-lubricated
- Vibrator – Oil bath-lubricated

TROUBLESHOOTING

SYMPTOM	POSSIBLE CAUSES AND SOLUTION
The motor will not start.	<ul style="list-style-type: none"> • Check the ON/OFF switch to ensure that it is switched to 'ON'. • Check the fuel supply. • If the motor is fitted, check the crankcase oil level as an oil sensor device is fitted to these motors, which prevents starting and stops the motor when the oil level is low. • Ensure the spark plug ignition lead is connected. • Check the carburettorlet and bowl to ensure they are clean.
The motor stops.	<ul style="list-style-type: none"> • Check the fuel supply. • Check that the fuel cock is turned on. • Check the condition of the air filter.
The Petrol Motor lacks power.	<ul style="list-style-type: none"> • Check the condition of the air filter. • Check the condition of the spark plug.
Insufficient vibration	<ul style="list-style-type: none"> • Check for a slipping or a missing vee belt. • Check that the motor-governed speed is 3,500 r/min.
The machine is not moving freely	<ul style="list-style-type: none"> • Check the underside of the plate for a build-up of material.

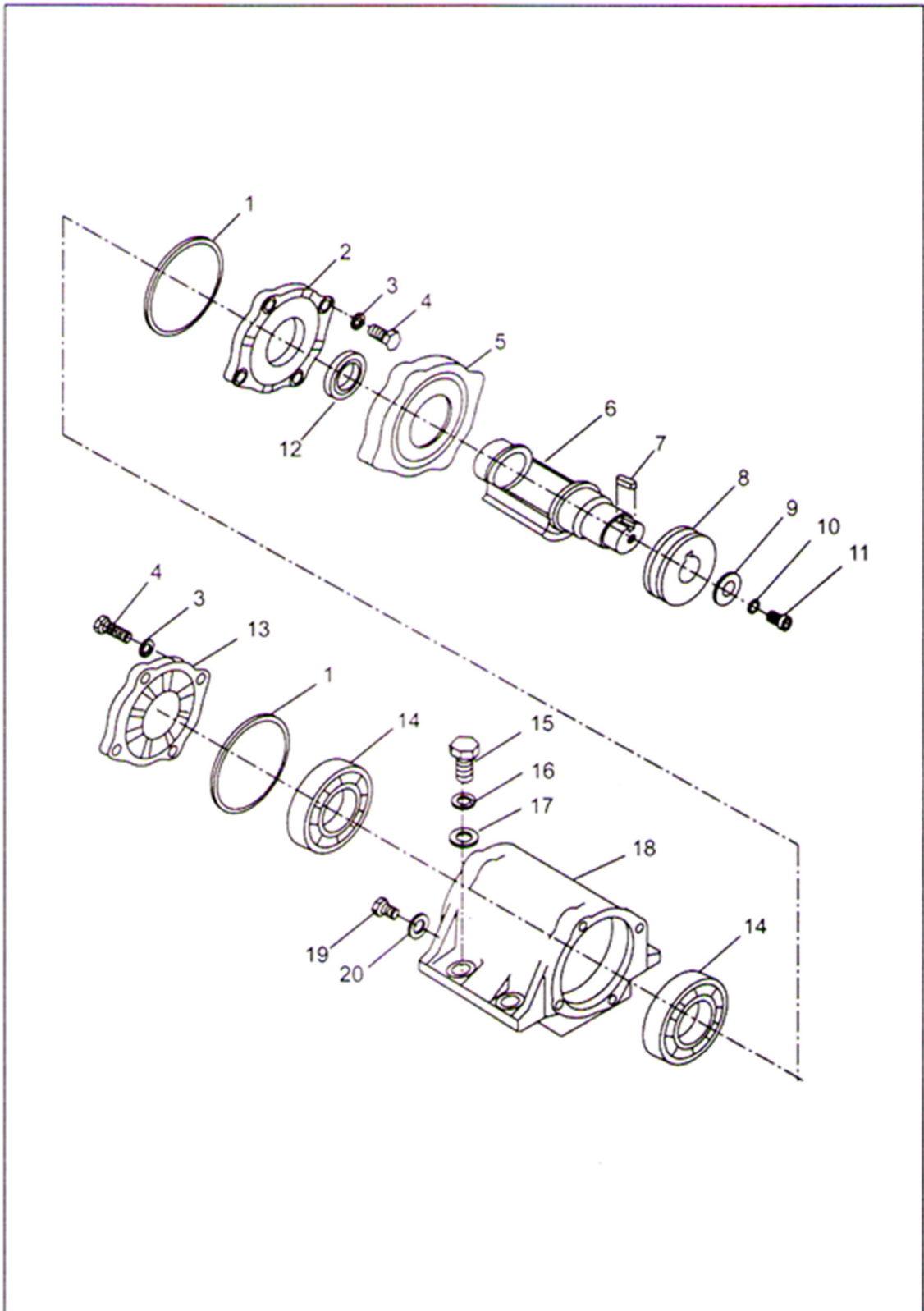
3.5. Parts list

MAJOR COMPONENTS LIST



NO.	DESCRIPTION	QUANTITY
1	Engine	1
2	Handle	1
3	Nut M10	4
4	Washer, plate M10	4
5	Washer, lock M10	4
6	Hexagonal bolt M10×30	2
7	Knob M10×25	2
8	Vib. proof handle	1
9	Rubber	2
10	Rubber coupling	2
11	Washer, plate 12.5×40×3	2
12	Hexagonal bolt M12×65	2
13	Clutch assembly	1
14	Washer, plate M8	1
15	Washer, lock M8	1
16	Hexagonal bolt M8×25	1
17	Belt cover, in.	1
18	Helt cover	1
19	Guard hook	1
20	Rolder, wheel	1
21	Base	1
22	Stop ring 14	2
23	Washer, plate M12	2
24	Wheel	2
25	Support, wheel	1
26	Vibrator assembly	1
27	Vibrating plate	1
28	Shock absorber	4
29	Washer, plate M10	4
30	Washer, lock M10	4
31	Nut M10	4
32	Throttle lever	1
33	Dragline	1
34	V-belt	1
35	Key, clutch assy 8×7×50	1
36	Washer, lock M12	2

VIBRATOR ASSEMBLY PARTS LIST



NO.	DESCRIPTION	QUANTITY
1	Packing	2
2	Case cover/pulley	1
3	Washer, lock M8	8
4	Hexagonal bolt M8×25	8
5	Cover seal, vib.	1
6	Ecc. rotary shaft	1
7	Key 8×7×18	1
8	Pulley, driven	1
9	Washer 11×40×2.5	1
10	Washer, lock M10	1
11	Hexagonal bolt M10×40	1
12	Oil seal	1
13	Case cover/shut-off	1
14	Bearing 6211	2
15	Hexagonal bolt M16×40	4
16	Washer lock M16	4
17	Washer, plate M16	4
18	Vibrating case	1
19	Plug, oil M12×1.25×20	1
20	Washer, copper M12	1

Umwelt – und Entsorgungshinweise

Hersteller an Verbraucher

Sehr geehrte Damen und Herren,

gebrauchte Elektro – und Elektronikgeräte dürfen gemäß europäischer Vorgaben **[1]** nicht zum unsortierten Siedlungsabfall gegeben werden, sondern müssen getrennt erfasst werden. Das Symbol der Abfalltonne auf Rädern weist auf die Notwendigkeit der getrennten Sammlung hin. Helfen auch Sie mit beim Umweltschutz. Sorgen Sie dafür, dieses Gerät, wenn Sie es nicht mehr weiter nutzen wollen, in die hierfür vorgesehenen Systeme der Getrenntsammlung zu geben.



In Deutschland sind Sie gesetzlich **[2]** verpflichtet, ein Altgerät einer vom unsortierten Siedlungsabfall getrennten Erfassung zuzuführen. Die öffentlich – rechtlichen Entsorgungsträger (Kommunen) haben hierzu Sammelstellen eingerichtet, an denen Altgeräte aus privaten Haushalten ihres Gebietes für Sie kostenfrei entgegengenommen werden. Möglicherweise holen die rechtlichen Entsorgungsträger die Altgeräte auch bei den privaten Haushalten ab.

Bitte informieren Sie sich über Ihren lokalen Abfallkalender oder bei Ihrer Stadt – oder Gemeindeverwaltung über die in Ihrem Gebiet zur Verfügung stehenden Möglichkeiten der Rückgabe oder Sammlung von Altgeräten.

[1] RICHTLINIE 2002/96/EG DES EUROPÄISCHEN PARLAMENTS UND DES RATES
ÜBER ELEKTRO – UND ELEKTRONIK – ALTGERÄTE

[2] Gesetz über das Inverkehrbringen, die Rücknahme und die umweltverträgliche Entsorgung
von Elektro – und Elektronikgeräten (Elektro – und Elektronikgerätegesetz – ElektroG).

Utylizacja produktu

Produkty elektryczne i elektroniczne po zakończeniu okresu eksploatacji wymagają segregacji i oddania ich do wyznaczonego punktu odbioru. Nie wolno wyrzucać produktów elektrycznych razem z odpadami gospodarstwa domowego. Zgodnie z dyrektywą WEEE 2012/19/UE obowiązującą w Unii Europejskiej, urządzenia elektryczne i elektroniczne wymagają segregacji i utylizacji w wyznaczonych miejscach. Dbając o prawidłową utylizację, przyczyniasz się do ochrony zasobów naturalnych i zmniejszasz negatywny wpływ oddziaływania na środowisko, człowieka i otoczenie. Zgodnie z krajowym prawodawstwem, nieprawidłowe usuwanie odpadów elektrycznych i elektronicznych może być karane!

For the disposal of the device please consider and act according to the national and local rules and regulations.

CONTACT

expondo Polska sp. z o.o. sp. k.

ul. Nowy Kisielin – Innowacyjna 7
66-002 Zielona Góra | Poland, EU

e-mail: info@expondo.com